



Annual 2024 2025 Report



Celebrating twenty one years of social impact

***E**mpowering lives and enriching communities*

ASHADEEPA ANGAVIKALARA SARVA ABHIWRUDDHI SEVA SAMSTHE
INTEGRATED ANNUAL REPORT 2024-25



contact@ashadeepa.org



www.ashadeepa.org



+91 9986509910 / 8618002115

Geographical coverage

Bagalkot district is base location,
Extended to Vijayapura, Bangalore, Mysore, and Mandya districts of Karnataka state, India



Esteemed Donors, Well-wishers, and Patrons,

It is with immense gratitude that I present this report on Ashadeepa, founded in 2004 with a mission to redefine disability services in India. Our journey has been a testament to our relentless pursuit of this goal.

This report serves as both a celebration of our achievements and a roadmap for the future. It maps our interventions to the Sustainable Development Goals, documenting our progress in fostering development and sustainable employment for people with disabilities. Our next ambitious goals are to achieve financial freedom for persons with disabilities, women, and youth, and to ensure children with disabilities are mainstreamed without developmental barriers.

We extend our profound thanks to the many individuals and organizations who have supported our vision. Our mission is fueled by the unwavering faith of our funding partners and collaborators. We are particularly grateful to the Karnataka State and Central government departments, National Trust, and other key partners for their invaluable financial and technical support. A special acknowledgment goes to the Directorate of Women And Child Development Department of Karnataka, the District Disability Welfare Office in Bagalkote, and many others who have been integral to our journey.

Finally, I would like to express my deepest gratitude to our governing board, advisory board, and our dedicated staff, who are the true champions of our projects. Their unwavering determination and commitment have enabled us to create a lasting impact on the lives of children, women, and youth with disabilities.

Mrs. Gouramma S. Kashappanavar
Former Member of Legislative Assembly
Government of Karnataka

In this Integrated Report, we are disclosing forward-looking information to enable Community stakeholders, Government officials, Ministries, Funding partners, High-Networth individuals, Beneficiaries and Well-wishers to comprehend our prospects and understand them about our approaches in connecting with thematic prospects for building proximate partnership for creating lasting impact achieving sustainable development goals.

This report helps to understand our operating models with varied flagship programmes with different specific interventions helps to present lasting and feasible impacts. And this report helps readers to know about our supporters stands with us for achieving our vision to bring such changes in thousands of lives for their sustainable development and leading dignified life. Our supporters contributes us through sharing their in valuable knowledge, experince and time to build Ashadeepa professionally to serve many lives and contribute to complete Twenty years of embarking journey helps to leave our footprint and feasible impacts in community we serve for.

We have settled thousands of lives through its programmes and projects with specific interventions which sustains lives to live independent life with dignity and respect in society.

How the commitment to a
★People ★Partners ★Performance
works at Ashadeepa Nonprofit



People

At Ashadeepa Samsthe, we have enriched our People through an overarching ambition to rank among the best non-profit organizations in India. This future-facing aspiration has been complemented by capabilities, delegation, professionalized workplace, respect human dignity, commitment to values and fair treatment.



Partners

We want to express our deepest gratitude to our long-standing donors. Their unwavering support over the years has been instrumental in helping us achieve our mutual goals and create a lasting impact. This work wouldn't be possible without their continued trust and partnership.



Performance

At Ashadeepa Samsthe, we strongly believe that creating lasting impact through its quality operations ensures credible performance driving sustainable development and creating positive change in the community it serves.

ASHADEEPA ANGAVIKALARA SARVA ABHIWRUDDHI SEVA SAMSTHE

A registered nonprofit community led organization for community development

VISION

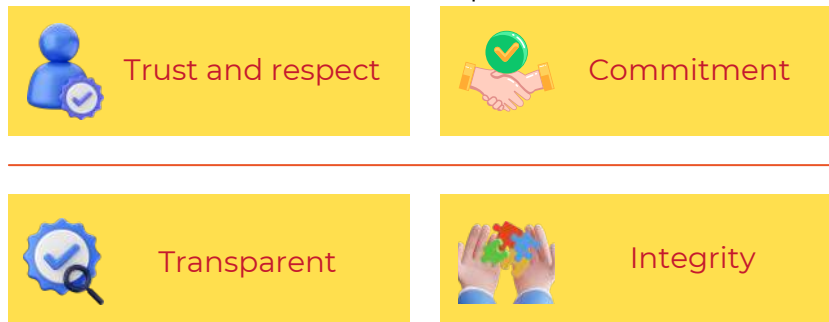
People with disability, women, children, youth and aged become contributing members of the society and lead life with dignity.

MISSION

- To create supportive environment for career advancement of PwD's by working in the area of counseling, education & skill building.
- To implement programs lead to sustainable employment of PwD's and women & youth.
- To provide needy services to the children with development delays and support to the parents.
 - To provide care, shelter, food & protection for elderly.
 - To touch upon 17000 lives by 2030.

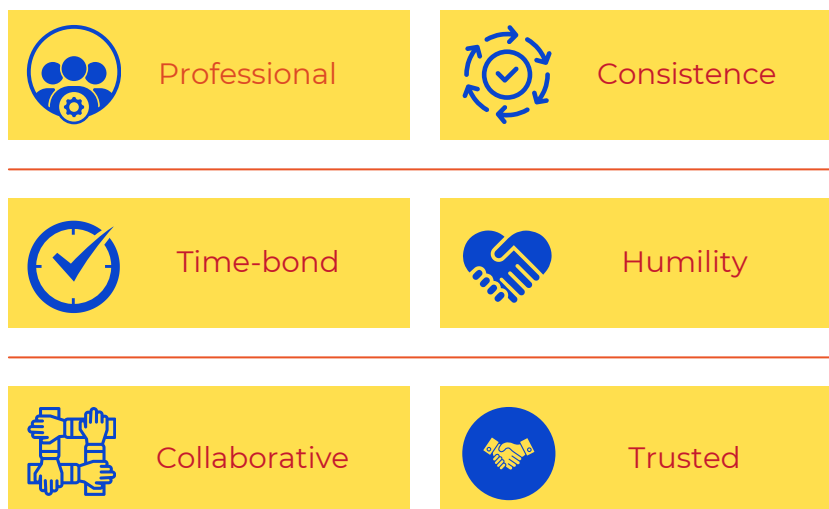
VALUES

We are deeply Indian; rooted in Bagalkote district, North-Karnataka. Historically and traditionally well known for Ilkal handloom Sarees nationwide and beyond. We born and blossomed here over two decades and we pledged and abide to serve community we live with Integrity, Commitment, Transparent, Trust, & Respect with lived experience.



OUR DNA

Six behaviours that bind us one organization. It defines the Personality and the way of working shared among our employees. Our DNA is to be Professional, Consistence, Time-bond, Humility, Collaborative & Trusted.





Who we are

Since last 20 years, Ashadeepa is committed working for the People with disabilities, their families, and communities to create sustainable change and make an inclusive India with equal dignity and respect for Divyangjans (Persons with disabilities), Women, Children and Aged.



What we do

Ashadeepa is a young yet successful community-based nonprofit organization working towards mainstreaming PwDs, Women, Children, Youth and Aged. Having an inclusive workforce, Ashadeepa team understands what it takes to ensure that no one is left behind. Our programs and services have been designed to ensure that a large group of PwDs, women and aged smaller way is able to access quality services / solutions to their issues.

Why we do

There are two reasons that we engaging social work through various need-based interventions.

Mr. Raghu's life story is one reason to founded Ashadeepa to serve People with Disabilities, where he neglected and exploited by the Rights of Persons with Disabilities being a polio victim / sufferer.

The geography needs interventions to serve the PwDs of the community, hence the Bagalkot district stands in 3rd rank, having highest population of Persons with Disabilities. - Census of PwDs 2011.

Ashadeepa, a leading community based organization, was established in 2004, by Raghu N. Hubballi and team. Vision is People with disability, Women, Children, Youth become contributing members of the society and lead life with dignity.

Our steady growth over the years has been propelled by our interventions, services and supports excellence, prudent expansion strategy and risk management. We have also built ensuring relationships with our stakeholders and donors who play pivotal role standing with us from many years ensures sustenance of ecosystem building for our target stakeholders through intensive interventions and approaches.

We are committed to creating tangible value for people we works for, thus ensuring long-term sustainable and resilient service models for community development. In this part, we never forget and failed to thanking our donors, private funding agencies, organizations and government departments and ministries, who stands with us for cause we works for to creating tangible impact mutually.

Year 2024-2025 which we turned off, was just amazing journey and much insightful in terms of evaluating ourselves. Ashadeepa again proved its sustainable approaches in all levels of its operations, overcoming financial challenges and producing various opportunities for our humble beneficiaries leveraging required funds, technology for uninterrupted learnings, resource building for creating impact at larger scale.

Organizational development activities

INPUTS

Financial

Central govt. grant : Rs. 13,20,000=00
State govt. grant : Rs. 14,94,496=00
Self-funding : Rs. 54,60,558=00
Unrestricted grant : Rs. 10,000,00=00
Donations raised : Rs. 5870675=00
Total : Rs. 1,51,45,729=00
Lowest paid : Rs. 5000=00
Highest paid : Rs. 40000=00

Governing team

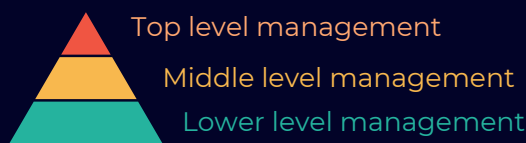
The governing body has a diverse composition, with both male and female member bringing unique perspectives and expertise.

Except two members, all are persons with disabilities and serve the geography with lived experience.

Members are expertise in Administration, Project and finance management, Project execution, evaluation and monitor, Resource mobilization and Human resource management.

Executive team

Dhwani Foundation's Niranthara-Organizational Change Management Initiative helped to build and nurture second-in-line leadership.



Gender	Full time	Part time	Consultant	Total
Male	20	04	00	24
Female	29	03	02	34
Female	49	07	02	58

Key policies

Prevention of Sexual Harassment at Workplace
Child Protection Policy

Ashadeepa is committed to creating an inclusive workplace where everyone can contribute knowledge, skills and promote themselves to learn greater and grow mutually.

Our services & approaches

Early Intervention & Early Education



Cross disability Pre-schools EI CBR & HBR Project



Disha-EI & School Readiness Scheme



Health & well-being of CwDs

1

Holistic development

2

Youth development

3

THEMATIC AREAS

4

Empower Women

5

Secure & care Aged

6

Education

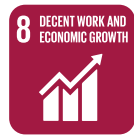
7

Advocacy for Entitlements & Mobility

Accessibility solution



Social security Schemes for PwDs



Shishupalan Daycare



Pankh-Employment



Women helpline 1091



Navajeevan Old Age Home



Punit-Special School



Holistic Development of Children

We aim to empower 300 children with disabilities through early intervention, inclusive education, and specialized therapies. By combining holistic curricula with essential nutrition, we nurture their physical, emotional, and cognitive growth unlocking their potential for social inclusion and a brighter future.



Youth Development Initiative

We aim to provide comprehensive livelihood training and establish employment linkages for youth with disabilities, enabling them to achieve economic independence and social integration. Since 2016, Ashadeepa works towards creating sustainable livelihood opportunities for Youth with Disabilities by training and providing them with employment opportunities in retail and allied sectors, thereby promoting diversity and inclusion in the workplace.



Gender Sensitive Initiative

To prevent gender-based violence through community based support interventions 24X/7 engaging professionals in counseling and legal guidance. And perform various outreach programmes which strengthen women in legal frameworks understanding relevant laws for legal assistance.

Also facilitates them to access livelihoods for economic independence. In the reported year, 26,449 women cases have resolved successfully.



Rights of Persons with disabilities

objective for the rights of persons with disabilities and children and women is to ensure their full and equal enjoyment of all human rights and fundamental freedoms, promoting inclusion, participation, and dignity across all aspects of life. This includes, but is not limited to, protection from discrimination, access to education, healthcare, employment, and political participation. In the reported year, 26,449 PwDs access benefits successfully



HEALTH & WELL-BEING OF CHILDREN

EARLY INTERVENTION & EARLY EDUCATION PROGRAMME



PROJECT BRIEF

“Cradle to school” project for children with developmental delay, disability and severe malnutrition between the age group of 0-8 years.

Since 2016, Our Early Intervention Program aims to ensure that children with disabilities and their families receive and benefit from high quality, free of cost therapy services. The program addresses needs of those children for functional, social, emotional and cognitive development working primarily with the trained therapists and team of other rehabilitative experts who work dedicatedly on improving child's development and making them independent. Ashadeepa has served more than 424 children till 31st March 2024. This project helps to

- Enhance Child's development pace.
- Provide Support and Assistance to the Family.
- Maximize a child's capacity and family's benefit to the society.

Early Intervention Program builds on the strengths of the child and trains parents to equip them to serve their child's special needs. Early Intervention techniques have proven to be a vital component in rehabilitation and the empowerment of those with disabilities. Our EI centers provides therapies for children diagnosed with Autism, Intellectual disability, Down syndrome, ADHD (attention deficit hyperactivity disorder) and Cerebral Palsy and assists children in Motor, Social, Language & Cognitive developments.



Project Sponsor

The Association of People with Disability, Bengaluru



Project Location

Ilkal & Hunagund taluks of Bagalkot district.
Kushtagi in some extent of Koppal district



Project Duration

1st August 2024 to 31st March 2025



Target beneficiaries

Direct beneficiaries: Children with disabilities.
Indirect beneficiaries: Parents and community stakeholders



Project Team

- Mr. Hanumanth Talawar
- Mr. Husenasab Mudagall
- Ms. Renuka Talawar

The following data presented since 2015-16 FY

Financial Year	Survey & Screening Camp	CwDs identified	CwDs referred by FW	CwDs enrolled under EI	Total Therapies provided	No. of Medical references	Corrective Surgery	Mobility support	Stakeholders training	Referred for Nutrition	Promoted for Education	No. of CwDs inactive	CwDs carry forward next year
2016-17	21	172	28	200	7200	46	14	161	2018	13	32	23	177
2017-18	13	18	06	201	9648	18	06	102	2023	11	42	33	168
2018-19	07	28	09	205	10311	29	09	86	2003	04	57	55	150
2019-20	10	38	12	200	10409	23	03	56	2012	12	32	43	157
2020-21	08	40	06	203	11300	14	02	63	1510	17	46	23	180
2021-22	-	-	-	180	-	-	-	-	-	-	-	21	157
2022-23	06	14	09	180	8640	13	01	52	1394	09	39	43	137
2023-24	02	18	02	157	9016	26	02	40	1317	11	56	28	129
2024-25	12	20	04	153	9711	21	01	23	1403	06	49	50	103

GLANCE OF ACTIVITIES AT DISHA-EARLY INTERVENTION & SCHOOL READINESS SCHEME



Physical & Occupational Therapy-

Special Childhood Education-

Medical Rehabilitation-

Personality Development

-Speech Therapy

-Speech Therapy

-Behaviour Modification

-Mobility Support

-Corrective Surgery

-Child Independence



EARLY



INTERVENTION PROJECT



Individual Family Support Plan

Building supportive & nurturing environment



Early Intervention Eco-system Building



-Support Families

-Empower Parents

-Enhance ability of self-advocacy for Rights



HEALTH & EDUCATION FOR CHILDREN

DISHA- EARLY INTERVENTION & SCHOOL READINESS SCHEME



BRIEFING ABOUT DISHA SCHEME

The scheme aims to setting up Disha Centres for early intervention for Persons with Disability (PwD) aged 0-10 years, covered under the National Trust Act.

Disha Day Care

Ashadeepa provides day-care facilities to PwD for at least 4 hours a day (between 8 am to 6 pm) along with age-specific activities. The batch size of a Disha centre is 20 PwDs, with a maximum number of PwDs allowed at 30% extra of batch size, i.e., 26 for Disha Centres. Upon reaching the maximum limit of 26 PwDs. Ashadeepa as registered organization, maintaining a 1:1 ratio for LIG (Low Income Group) and above LIG PwDs.

Disha-Early intervention and school readiness scheme helps to children (0 to 10 years) with four types of disabilities through therapies, counseling and training, to the parents and supports family members. The guidelines of the Disha Centres ensure day-care facilities for children with disabilities for at least 4 hours in a day along with age-specific activities. Further, the Centres are mandated to remain open for at least 21 days in a month. The minimum attendance required for a CwD is 20 days in a month.

Children with four types of disabilities such as Autism, Cerebral Palsy, Intellectual and Multiple disabilities get supporting by physiotherapy, speech therapy, mobility support freely, nutrition support along with nurturing and prepare for education, counseling for their parents and care givers as routinely. Parents also enriching by capacity building trainings on schemes that are available for empower them financially avoiding medical and other expenses.



Project Sponsor

National Trust
New Delhi



Project Location

Ilkal, Ilkal taluk, Bagalkot district
Karnataka



Project Duration

1st August 2024 to 31st March 2025



Target beneficiaries

Direct beneficiaries: CwDs below 10 years age, and Parents

Autism, Cerebral Palsy, Intellectual and Multiple disabilities



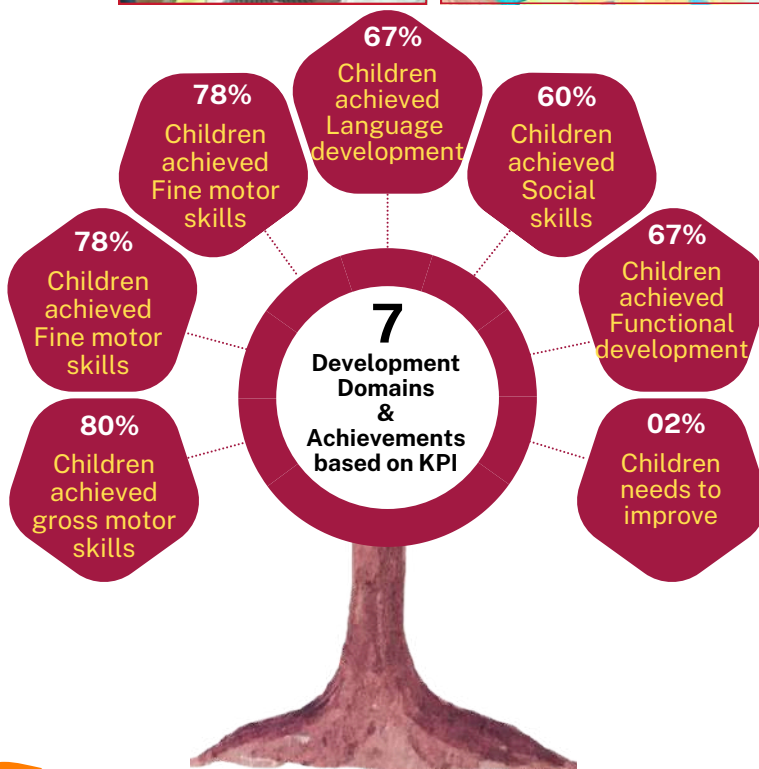
Project Team

- Mr. Ganesh. G
- Mr. Hanumanth. T
- Ms. Sainajbhi. M
- Mr. Muttappa. S
- Ms. Jamuna. S

The following impact data presented since 2022-2025 FY

Financial Year	Survey & Screening Camp	CwDs identified	CwDs referred by FW	CwDs enrolled under EI	Total Therapies provided	No. of Medical references	LPC Meeting	Mobility support	Parents training	Referred for Nutrition	Promoted for Education	No. of CwDs inactive	CwDs carry forward next year
2022-23	10	20	02	22	2438	04	7	18	12	07	07	08	14
2023-24	12	08	04	26	2368	05	12	0	10	10	05	06	20
2024-25	03	01	-	21	2563	03	12	07	10	12	10	02	19

GLANCE OF ACTIVITIES AT DISHA-EARLY INTERVENTION & SCHOOL READINESS SCHEME



-OUR INTERVENTIONS

- ✓ Strengthen CwDs
- ✓ Enabling development
- ✓ Ensure pre-school activity
- ✓ Empower parents/cares
- ✓ Mainstream children



HEALTH & WELL-BEING OF CHILDREN

CROSS DISABILITY PRE-SCHOOLS & EARLY INTERVENTION WITH OPTION FOR COMMUNITY-BASED & HOME-BASED PROJECT



PROJECT BRIEF

The project Cross Disability Pre-Schools and Early Intervention is primarily to prepare the children with all types of disabilities for their schooling in special schools and or integration at the appropriate stage in regular schools for inclusive education and to do early intervention to try and reduce the disability burden. The project aims to serve infants and children upto 6 years of age. We are ensuring need-based therapeutic and allied interventions with hot meals to our beneficiaries at school level, and home-interventions are much focus on interventions, individual family support plan, increase parents knowledge and skills to understand the needs of their infant or child. The school runs six hours on each working day.

Since 2022, Ashadeepa is engaging in the intervention for these children. child's optimal development and to facilitate the child's participation in family and community, offering trans-disciplinary individualized and family centered services to gain substantial improvements in the area of Physical skills, Cognitive skills, Communication skills, Self care, Adaptive skills, and Social-Emotional skills, which reduce incidents of additional and associated disabilities in children along with reduction of future complications in their learning, behaviour, and health issues. We encourage families participation in the therapeutic and rehabilitative process to understanding intervention strategies in family routines, conducting various capacity building trainings for parents and families for collaborative efforts for child development, monitor, and modify interventions as need which empowers parents in improved home-management and impact their child positively.



Project Sponsor

Self-funded by Ashadeepa, looking for grant-assistance



Project Location

Ilkal & Hunagund taluks of Bagalkot district, Karnataka.



Project Duration

1st August 2024 to 31st March 2025



Target beneficiaries

Direct beneficiaries: CwDs, 6 years below

Indirect beneficiaries: Parents and other stakeholders



Project Team

- Mr. Mallappa M
- Mr. Bhuvanesh R
- Mr. Raj Kiran M
- Mr. Fakkirayya K
- Dr. Mohan K
- Mr. Rangswamy
- Ms. Malati J
- Mr. Prabhu R
- Ms. Rehanabanu B

The following impact data presented since 2022-2025 FY

Financial Year	Survey & Screening Camp	CwDs identified	CwDs referred by FW	CwDs enrolled under EI	Total Therapies provided	No. of Medical references	Mid-Day Meals	Mobility support	Stakeholders training	Referred for Nutrition	CwDs inactive			CwDs carry forward next year
											Migration	Agebar	Death	
2022-23	06	21	04	25	3870	01	25	04	04	03	-	15	-	14
2023-24	12	4	07	25	4680	01	25	-	08	08	-	5	-	20
2024-25	03	5	0	25	5754	-	25	01	06	03	-	10	01	14

SHAPING STRONGER FUTURE FOR CHILDREN WITH SPECIAL NEEDS



EDUCATION FOR SPECIAL NEED CHILDREN

PUNIT- A SCHOOL FOR HOPE OF CHILDREN WITH INTELLECTUAL DISABILITY



PROJECT BRIEF

Ashadeepa established “Punit-A School for Hope of Children with Intellectual Disability (Residential School) in 2022, this initiative has been a beacon of hope for many families living below the poverty line having children with an intellectual disability.

Its a dream of our organization to serve children with an intellectual disability where there is now scope of support to serve these children, even the district itself vulnerable and found gap to serve these children. Ashadeepa truly stands out is their commitment to providing quality education tailored to the unique needs of these children. The fact that we offer education for free, along with a mid-day meal, is a game-changer for families who often struggle to make ends meet. It's heartwarming to see how Ashadeepa not only focuses on the educational aspect but also empowers families by giving their children the tools they need to thrive.

The impact of this school goes beyond just academics; it fosters a sense of community and belonging for both the children and their families. This initiative created stories of children gaining confidence and skills that will serve them for a lifetime.

We started the school with hoping for grant assistance from Karnataka state government to serve more vulnerable children suffering from an intellectual disability across the Bagalkote district and beyond. Its difficult to manage and ensure all the necessary action to ensure quality education, need-based interventions and co curricular activities for these children, obviously financial requirements always be there and request for support assistance is much needed and appreciated.



Project Sponsor

Self-funded by Ashadeepa, looking for grant-assistance



Project Location

Ilkal, Ilkal taluk, Bagalkot district Karnataka



Project Duration

1st August 2024 to 31st March 2025



Target beneficiaries

Direct beneficiaries: Children with intellectual disability
Parents / Care-givers.



Project Team

- Ms. Bhagyashree A
- Ms. Shruti
- Ms. Harshita H
- Ms. Malavika M
- Ms. Sujata R
- Mr. Bhavasa B
- Ms. Netravati J
- Mr. Prabhu R
- Ms. Amina Line
- Mr. Gangappa M
- Ms. Paramma K



Impact numbers since 2021

Year	Pre-Primary	Primary	Total
2022-23	27	09	36
2023-24	22	14	36
2024-25	17	19	36
Male: 20 Female: 16 Residents:22 Non-res: 14			

GLANCE OF ACTIVITIES AT PUNIT-A SCHOOL FOR HOPE OF CHILDREN WITH INTELLECTUAL DISABILITY



HOLISTIC DEVELOPMENT OF CHILDREN

SHISHUPALANA-DAY CARE PROGRAM OF WORKING WOMEN



PROJECT BRIEF

The "Shishupalana Scheme" in Karnataka, also known as Shishu Palana Kendra, is a program focused on providing childcare for children of working parents. These centers offer a safe and stimulating environment for children aged 6 months to 6 years, promoting their holistic development.

The scheme aims to foster physical, social, emotional, language, and cognitive development. Includes facilities like adequate space, a kitchen, clean drinking water, electricity, and washroom along with play and pre-school facilities.

The overall objectives of the scheme are

- Enhancing the health and nutritional well-being of children.
- Establishing a robust foundation for the child's physical, mental, and social development.
- Mitigating mortality, morbidity, malnutrition, and school attrition among children.
- To empower mothers to effectively address the health and nutritional requirements of their children through the provision of health and nutrition education.

Ashadeepa nonprofit organization runs two Shishu Palana Centers in Ilkal and district head quarter Bagalkote since 2022.



Project Sponsor

Department of Women & Child Development, Bagalkote (GoK)



Project Location

Ilkal & Bagalkote
Bagalkote district



Project Duration

1st August 2024 to 31st March 2025



Target beneficiaries

Direct beneficiaries: Children and working mother's



Project Team

- Bagalkote Centre
 - Ms. Shruti Mundasad
 - Ms. Vidya Mane
 - Ms. Shreedevi Moorankanada
- Ilkal Centre
 - Ms. Madhushree Aili
 - Ms. Kirti Bogam
 - Ms. Jamuna Yalagundi

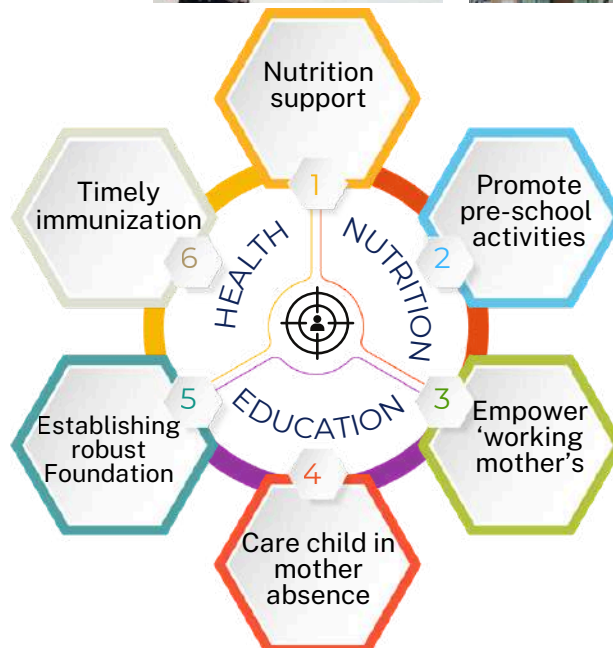
Impact numbers since 2022

Vatsalya Shishu Palana Center Details Of Bagalkote						Vatsalya Shishu Palana Center Details of ILKAL					
Financial Year	Carry forward Beneficiary Opening (A)	No.of Beneficiary (B)	Total A+B (C)	Inactive Beneficiaries (D)	Remaining Carry forward Beneficiary C-D	Financial Year	Carry forward Beneficiary Opening (A)	No.of Beneficiary (B)	Total A+B (C)	Inactive Beneficiaries (D)	Remaining Carry forward Beneficiary C-D
2022-23	0	17	17	0	17	2022-23	0	29	29	4	25
2023-24	17	28	45	27	18	2023-24	25	15	40	15	25
2024-25	18	15	33	8	25	2024-25	25	32	57	32	25
Total No of Beneficiaries		60		35		Total No of Beneficiaries		76		51	25

A QUICK LOOK OUR SHISHUPALAN ACTIVITIES



**-WE ARE HERE TO
CARE YOUR CHILD**



YOUTH DEVELOPMENT

PANKH-VOCATIONAL TRAINING & EMPLOYMENT FOR YOUTH WITH DISABILITIES



PROJECT BRIEF

Since 2016, Ashadeepa implementing the project Pankh-Vocational training and employment project for youth with disabilities in aligning with the vision of Trust for Retailer and Retail Associates Mumbai (TRRAIN) as funding partner contributes to achieve our vision.

TRRAIN was the brainchild of Mr. B.S. Nagesh, and was born after in-depth research was conducted amongst retail employees and employers, both in modern and traditional retail. This study, conducted by an independent body, indicated that a vast majority of people working in the retail sector hardly ever felt a sense of pride or dignity from their work. Further, forms of support or social inclusion were hard to come by, and upskilling or learning new skills was almost entirely out of the question. Unsettled by the hard hitting research findings, Mr. Nagesh decided it was time for him to give something back to the industry that had given him so much. Thus began the story of TRRAIN.

The concept designed under the title of Pankh-Destiny of Wings which support and empower the retail industry by training the next generation of retail employees to be an asset to any retail organization they might become a part of, based on their warmth, humility and enthusiasm for work. Through NGO partnerships across the Karnataka and countrywide, TRRAIN strives hard for the empowerment for the differently abled and low-income women, in the retail sector by providing them with means to support sustainable livelihoods for themselves and their families to lead dignified, self-sustainable, and independent life.



Project Sponsor

TRRAIN, Mumbai



Project Location

Training centres are located in ILKAL, Bengaluru, Mysore and Mandya district head-quarters in Karnataka.



Project Duration

1st Sept 2024 to 31st March 2025



Target beneficiaries

Direct beneficiaries: YwDs and Parents are primary beneficiaries.



Project Team

- Mr. H.S. Bepari
- Mr. Iranna Mannapur
- Mr. Mariswamy
- Ms. Sujata
- Ms. Muttulaxmi
- Mr. Rangaswamy
- Mr. Nandish
- Ms. Vanita K. P



Impact numbers since 2021

Year	Ilkal	C'durga	B'lore	M'sore	Mandya	Employment
2016-17	30					80% Placem ent achieve d with one year of follow ups
2017-18	99	125				
2018-19	75	125				
2019-20	125	125				
2020-21	-					
2021-22	100		20			
2022-23	75		50			
2023-24	75		175			
2024-25	120		135	120	70	
Total	699	375	380	120	70	
Total impact number: 1644						

FLEETING LOOK OUR PANKH-VOCATIONAL TRAINING FOR EMPLOYMENT



45 days training with hospitality

Job placement Follow-ups Alumni day

Rise ABOVE!

Life-skill development

I'm Very PROUD -of you-

I am SUCCESSFUL

I am CONFIDENT

Computer skill & work-readiness

I AM STRONG

I DESERVE to be HAPPY

Build language proficiency (English)

I am HAPPY

I am SMART

I'm UNIQUE

Retail-Math, customer handling

FUNCTIONS ACROSS DISTRICTS AS BELOW

ILKAL, Bagalkote district

Bengaluru, Metropolitan city

Mysore, District headquarter

Mandya, District headquarter

YOUTH DEVELOPMENT

GARV SE- RURAL LIVELIHOOD INITIATIVE



PROJECT BRIEF

In collaborations with EnAble India nonprofit organization Ashadeepa striving for enabling livelihood ecosystem building through 8 key steps is a structured model aim at empowering persons with disabilities (PwDs) by promoting sustainable livelihoods. It starts by creating a network of support through partnerships with anchor NGOs and RSETIs, followed by the formation of Enabler Committees at the Panchayat level to identify suitable PwD candidates and address local challenges. Local market surveys are then conducted to identify viable business opportunities suited to the skills and needs of PwDs. The Margadarshi Workshop helps individuals assess their strengths and choose between self-employment and wage employment before they enter formal training.

Further support is provided by forming an Influencer Group of district-level stakeholders who offer mentorship and technical assistance. This is followed by a 10-day EDP training at RSETIs to prepare participants with business and life skills. After training, a 6-month settlement follow-up ensures initial business setup support, while two years of post-settlement support offer ongoing mentorship to address both entrepreneurial and disability-related challenges. Together, these steps build a holistic ecosystem that enables PwDs to pursue sustainable and independent livelihoods.



Project Sponsor

EnAble India, Bengaluru



Project Location

Vijayapur district, Karnataka



Project Duration

15th Oct 2024 to 31st March 2025



Target beneficiaries

Direct beneficiaries: Persons with disabilities and families.



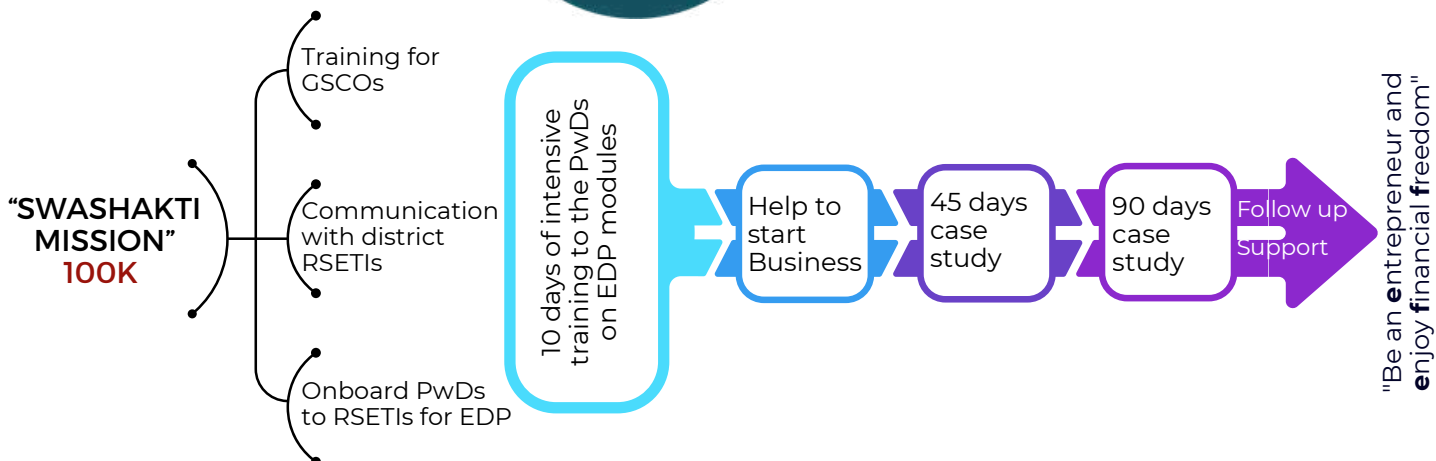
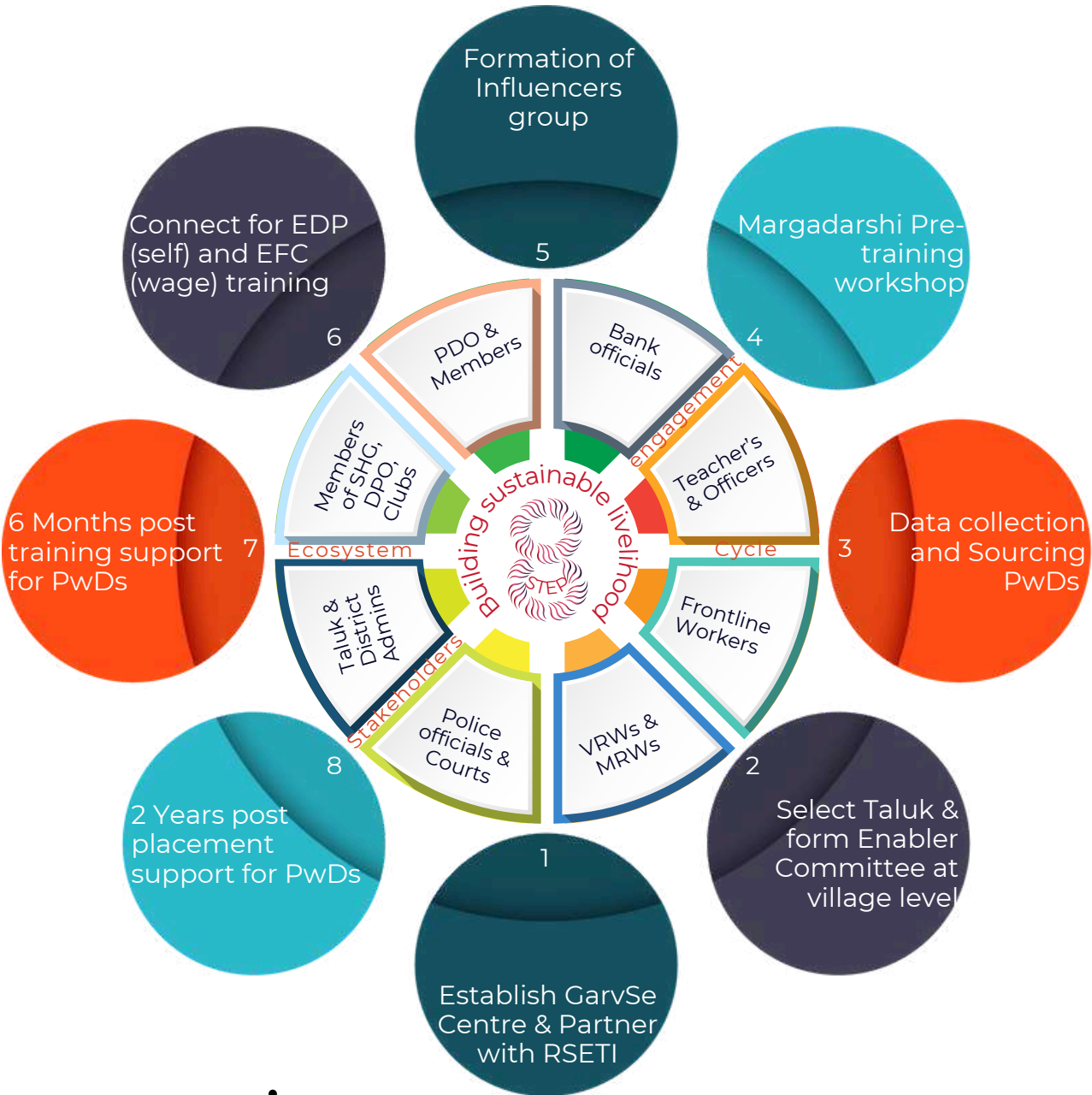
Project Team

-GSCO: Mallappa S. Managavi
• Mrs. Sangeeta Hosamani
• Mr. Aminappa Hosamani

The following impact data presented since 2011-2012 FY

Financial Year	EFC Batch	EDP Batch	Trained totally	Successful settlement	Income earned within 45 days	Income earned after 90 days	Extended income level of a year
2022-23	57	65	122	98	>6500 <8000	>8001 <13500	>13500<18000
2023-24	72	24	96	77	>6500 <8000	>8001 <13500	>13500<18000
2024-25	-	23	23	18	>6500 <8000	>8001 <13500	>13500<18000
Total	129	112	241	212	35% of PwDs engaged in multiple self-employment activities, leading sustainable livelihood.		

AN EXCLUSIVE PREVIEW OF GARV-SE RURAL LIVELIHOOD INITIATIVE FOR PWD'S UNDER "SWASHAKTI MISSION" 100K



EMPOWERING WOMEN

"SANTHWANA" WOMEN HELPLINE 1091



PROJECT BRIEF

Its our first project, we have received by Karnataka State Government implement in ILKAL and Hunagund taluks in Bagalkote district. The state government recognized us as an grassroot organization and sanctioned it in the year 2011. This was a key milestone that we started our journey with specific intervention for women living with family issues such as dowry, domestic and sexual abuse or exploitation.

Santhwana Women Helpline Scheme aims to ensure counseling and necessary timely help to women who are victims of various atrocities as explained above. The scheme is intended to assure legal assistance to the victims of rape, sexual harassment, domestic violence and dowry harassment.

Government of Karnataka's Directorate of Women and Child Development Department implemented through NGOs funded by the respective department, Santhwana Helpline Centres are functioning 24*7 with a counselor and 3 social workers to provide counselling to women in distress.



Project Sponsor

Department of Women & Child Development, Bagalkote (GoK)



Project Location

Ilkal & Hunagund Taluks
Bagalkote



Project Duration

1st Sept 2024 to 31st March 2025



Target beneficiaries

Direct beneficiaries: Aggrieved women and their families



Project Team

- Ms. Bhagyashree Julagudda
- Ms. Savitri Hiremath
- Ms. Savitri Acharya
- Ms. Nagamani Nemadi

The Following impact data presented since 2011-12 FY

Santwana Women Help Line
The following impact data presented since 2011-2012 FY

Financial Year	Dowry Atrocity				Sexual Harassment				Domestic Violence				Rape Assault				Polygamy				polyandry				Divorce				Other				Total			
	Open ing Cases	enrol ment	Settle ment	Due	Open ing Cases	enrol ment	Settle ment	Due	Open ing Cases	enrol ment	Settle ment	Due	Open ing Cases	enrol ment	Settle ment	Due	Open ing Cases	enrol ment	Settle ment	Due	Open ing Cases	enrol ment	Settle ment	Due	Open ing Cases	enrol ment	Settle ment	Due	Open ing Cases	enrol ment	Settle ment	Due				
2011-12	0	5	2	3	0	2	0	2	0	61	42	19	0	0	0	0	0	6	1	5	0	0	0	0	0	3	0	3	0	18	3	15	0	95	48	47
2012-13	3	2	4	1	2	0	2	0	19	102	71	50	0	0	0	0	5	2	5	2	0	0	0	0	3	0	2	1	15	11	12	14	47	117	96	68
2013-14	1	0	0	1	0	0	0	0	50	88	93	45	0	0	0	0	2	2	3	1	0	0	0	0	1	0	1	0	14	26	27	13	68	116	124	60
2014-15	1	0	0	1	0	0	0	0	45	120	95	70	0	0	0	0	1	0	0	1	0	0	0	0	0	0	0	0	13	17	21	9	60	137	116	81
2015-16	1	1	0	2	0	0	0	0	70	160	184	46	0	1	0	1	1	2	2	1	0	0	0	0	0	0	0	0	9	18	11	16	81	182	197	66
2016-17	2	0	0	2	0	0	0	0	46	184	200	30	1	0	0	1	1	0	0	1	0	0	0	0	0	0	0	0	16	9	7	18	66	193	207	52
2017-18	2	0	0	2	0	0	0	0	30	170	160	40	1	0	0	1	1	0	0	1	0	0	0	0	0	1	0	1	18	9	18	9	52	180	178	54
2018-19	2	0	0	2	0	0	0	0	40	180	169	51	1	0	1	0	1	0	0	1	0	1	0	1	1	0	0	1	9	9	10	8	54	190	180	64
2019-20	2	2	1	3	0	0	0	0	51	174	209	16	0	1	0	1	1	1	0	2	1	1	1	1	1	0	1	0	8	5	9	4	64	184	221	27
2020-21	3	3	2	4	0	0	0	0	16	138	125	29	1	1	0	2	2	4	2	4	1	2	1	2	0	1	0	1	4	9	6	7	27	158	136	49
2021-22	4	1	3	2	0	0	0	0	29	187	180	36	2	1	0	3	4	2	0	6	2	1	0	3	1	2	0	3	7	6	3	10	49	200	186	63
2022-23	2	1	2	1	0	2	1	1	36	180	201	15	3	1	2	2	6	5	6	5	3	2	2	3	3	3	2	4	10	16	20	6	63	210	236	37
2023-24	1	1	1	1	1	2	2	1	15	158	170	3	2	0	1	1	5	0	3	2	3	0	1	2	4	0	4	0	6	0	4	2	37	161	186	12
2024-25	1	0	1	0	1	1	2	0	3	166	169	0	1	0	1	0	2	4	6	0	2	0	2	0	0	8	8	0	2	7	9	0	12	186	198	0
Total		16	16	0		7	7	0		2068	2068	0		5	5	0		28	28	0		7	7	0		18	18	0		160	160	0		2309	2309	0

VISUAL INSIGHTS

24/7 SUPPORT FOR AGGRIEVED WOMEN
ONE CALL AT A TIME; WHERE HELP MEETS HOPE



Protecting identities, ensuring privacy

EMPOWERING WOMEN

MICRO ENTERPRISE DEVELOPMENT PROGRAM



PROJECT BRIEF

In partnership with NABARD Bagalkote, the Ashadeepa non-profit organization implemented a Micro Enterprise Development Program (MEDP) aimed at empowering rural women. The comprehensive training focused on equipping participants with practical and marketable skills in tailoring, designing, and embroidery.

This initiative goes beyond mere skill acquisition. The program is specifically designed to provide a holistic pathway to financial independence. By establishing crucial market linkages, the trained women are connected with opportunities to sell their products, ensuring their hard work translates into tangible income. Furthermore, the program facilitates access to credit linkages, providing the necessary capital for the women to launch and sustain their own micro-enterprises.

Through this end-to-end support, the program's ultimate goal is to transform these rural women into successful entrepreneurs. This not only allows them to generate a stable income but also enables them to lead self-sufficient and dignified lives, contributing to their personal empowerment and the economic well-being of their communities.



Project Sponsor

National Bank for Agriculture and Rural Development (NABARD)



Project Location

Ilkal, Ilkal Taluk
Bagalkote



Project Duration

15th April 2024 to 30th April 2024
(15 days of training for 30 women)



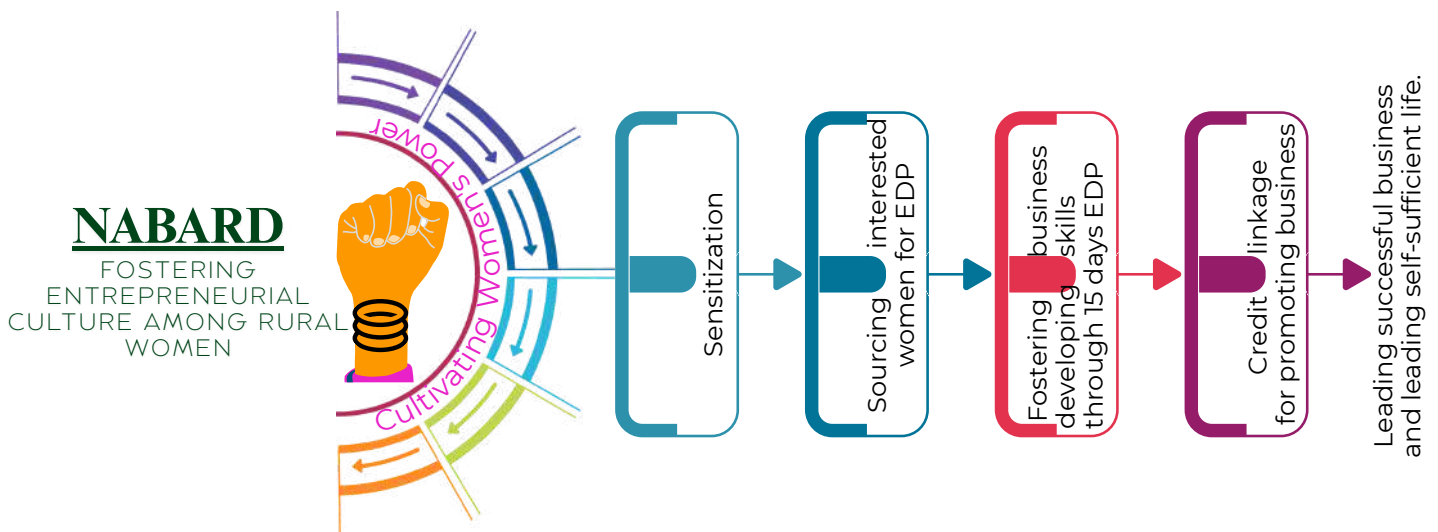
Target beneficiaries

Direct beneficiaries: Women from economic disadvantaged background, and families.



Project Team

- Ms. Ambika Chouhan
- Ms. Sharadha Karabhari



VISUAL INSIGHTS

MICRO ENTERPRISE DEVELOPMENT PROGRAM



DESIGNED PRODUCTS UNDER MEDP PROGRAM



SECURING LIVES OF THE AGED WITH CARE & PROTECTION

“NAVAJEEVAN” OLD AGE HOME



PROJECT BRIEF

Ashadeepa is dedicated to securing the lives of vulnerable aged individuals through its Navajeevan Old Age Home. Our mission is to enhance the overall well-being and quality of life for the elderly, fostering a profound sense of dignity and self-worth. We provide personalized care that alleviates financial burdens, allowing residents to focus on their well-being and happiness.

Key Support Services:

- **Holistic Care:** We provide shelter, nutritious food, clothing, and compassionate care for all residents.
- **Emotional & Physical Support:** Seniors receive emotional support, counseling, and physical care to overcome by challenges they are facing.
- **Specialized Assistance:** We arrange periodic clinical, legal, and additional support services as needed.
- **Community Engagement:** Regular activities foster connections between residents and local volunteers.
- **Skill Development & vocational training:** Workshops in on craft making, yoga, therapy encourages engagement.
- **Therapy & Advocacy:** Residents receive need-based therapy support, and we engage in awareness and advocacy for the protection of the aged.



Project Sponsor

Self-funded by Ashadeepa, looking for funding assistance



Project Location

Ilkal
Bagalkote district



Project Duration

1st April 2024 - 31st March 2025



No. of target beneficiaries

Direct beneficiaries: Aged



Project Team

- Ms. Bhagyashree Julagudda
- Ms. Maruti Jamindar
- Dr. Usha Guram
- Ms. Gangawa Hallur
- Ms. Ambika Chavan
- Ms. Amina Line
- Ms. Manjula Medikeri
- Ms. Netravati
- Ms. Sheeta R
- Mr. Vasant Sonar
- Mr. Rahul Sarode
- Mr. Vijakumar Gurikar
- Paramma K

The following impact data presented since 2021-2022 FY

NAVAJEEVANA OLD AGE HOME						
Financial Year	Carry forward Beneficiaries Opening (A)	Enrolled No. of Beneficiaries (B)	Total A+B (C)	Reintegration with Families of Beneficiaries (D)	No of Death Beneficiaries (E)	Beneficiaries Carry forward C-D & E
2020-21	0	55	55	4	0	51
2021-22	51	1	52	0	0	52
2022-23	52	0	52	1	1	50
2023-24	50	58	108	27	2	79
2024-25	79	42	121	81	7	33
Total No of Beneficiaries		156		113	10	

PICTURE-DRIVEN UNDERSTANDING 24/7 SUPPORT FOR AGED RESIDENTS COMFORT, DIGNITY, AND CARE FOR SENIORS



UPHOLD HUMAN DIGNITY A NEW HOME FOR NEW BEGINNINGS DONATE TO BUILD OLD AGE HOME



ADVOCACY FOR RIGHTS OF PWDS & SENIOR CITIZENS

SUPPORT FOR ENTITLEMENTS & MOBILITIES



PROJECT BRIEF

Ashadeepa Angavikalara Sarva Abhiwruddhi Seva Samsthe, based in Ilkal of Bagalkot district, Karnataka, is a unique organization founded and led by persons with disabilities. With a steadfast vision to empower Persons with disabilities, Women, Children, Youth and Aged, the organization has been relentlessly working to promote inclusion, dignity, and rights through strong advocacy and strategic lobbying with government bodies at various levels. Since 2004, Ashadeepa has remained at the forefront of advocacy-based initiatives, striving to ensure that persons with disabilities and senior citizens receive their rightful access to government schemes, services, and entitlements. Through consistent efforts, the organization has impacted over thousands of individuals across Bagalkote district by facilitating access to essential welfare schemes from Karnataka and the Central Government of India.

The organization has successfully linked thousands of beneficiaries to key social protection programs such as:

- Niramaya Health Insurance Scheme
- Pension Schemes for Widow, PwDs and Senior Citizens
- Mobility / accessible devices for PwDs
- Credit Linkages for PwDs for self-employment

Beyond, Ashadeepa has also forged collaborations with numerous corporate agencies and private philanthropic partners. These alliances have enabled the provision of essential mobility aids with customized appliances significantly enhancing their quality of life and independence more inclusivity.



Project Sponsor

Self-funded Intervention



Project Location

Bagalkote & Vijayapur districts
Karnataka State



Project Duration

1st April 2024 to
31st March 2025



No. of target beneficiaries

Direct beneficiaries:
Children with disabilities, Youths,
Women, Persons with disabilities,
and Senior Citizens.



Project Lead & Team

- Mr. Raghu N. Hubballi
- Mr. Hanamanth Talawar
- Mr. Husenasab Mudagall
- Ms. Renuka Talawar
- Mr. Iranna Mannapur
- Mr. Ameenappa Hosamani

The following impact data presented since 2015-2016 FY

Financial Year	Pension	Niramaya health ins.	Health referrals	Corrective surgery	Rehab	Mobility distribution	Honora rium	Nutrition Referrals	Enrolment for Edu.	Scholar ship	Bus/Train Pass	Bank Credits	Hot-Meal for CwDs	Income Generation Activities
2016-17	598	-	46	14	18	161	-	13	32	15	64	60 SHGs connect ed for credit linkage	-	960
2017-18	1120	-	18	06	12	102	-	11	42	38	51	Rs. 90 Lac	-	-
2018-19	797	-	29	09	10	86	-	04	57	51	29	10 PwDs support ed by Revolvin g Fund	-	-
2019-20	910	-	23	03	05	56	-	12	32	29	18	25	61	96
2020-21	1710	-	14	02	04	63	-	17	46	41	47	61	53	53
2021-22	1554	318	14	-	07	-	-	-	-	-	32	147	1231	1231
2022-23	1326	294	04	12	16	250	30	64	61	42	50			
2023-24	79	411	49	03	04	52	-	-	212	84	28			
2024-25	112	428	21	01	04	103	-	06	49	63	68			
Total	8206	1451	218	50	80	873	30	127	531	363	387			

A BRIEF LOOK ABOUT THE ORGANIZATIONAL EFFORT THROUGH ADVOCACY, LOBBYING AND SUPPORT FOR VARIOUS STAKEHOLDERS



Continued...



ORGANIZATIONAL CHANGE MANAGEMENT INITIATIVE

DASRA, REBUILD INDIA FUND



PROJECT BRIEF

Ashadeepa extends its sincere thanks to the Dasra Rebuild India Fund for the five-year unrestricted grant support. This strategic investment empowers our operational and programmatic growth, enabling us to tap into diverse resources and fulfill our vision of creating lasting community impact. The Dasra Rebuild India grant has significantly enhanced our Early Intervention Centers, boosting the well-being and physical development of children with disabilities. This support has also unlocked the potential of our personnel through access to diverse therapy materials, empowering them to strive for these children's holistic development.

Crucially, the grant is also helping us build robust donor networks and tap into new resources, securing increased funding from HNIs and corporate donors to further invest in our cause. This broader impact on organizational development, including streamlining internal policy frameworks, is paving the way for our sustainable growth. This effort directly complements our previous initiatives in organizational change management, specifically the Niranthara program supported by Dhvani Foundation, Bengaluru, ensuring a cohesive path toward lasting impact. In essence, Dasra aims to professionalize and amplify the impact of philanthropy in India by ensuring funds are deployed strategically and by empowering local, grassroots non-profits to address complex social challenges.



Project Sponsor

Impact Foundation (India)
-Dasra, Rebuild India,
An unrestricted grant



Project Location

Ilkal, Bagalkote district,
Karnataka



Project Duration

1st June 2023 to 1st June 2028
-A five-year funding commitment



Target beneficiaries

Dasra, Rebuild India grant streamlines our operations and strengthens programmatic resilience, ultimately enhancing our service to stakeholders.



Project Team

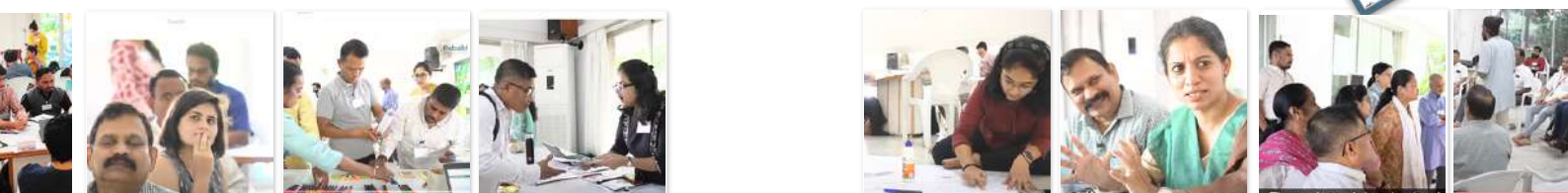
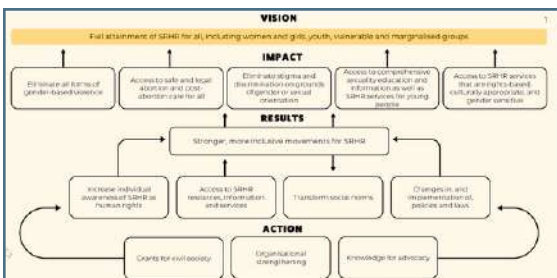
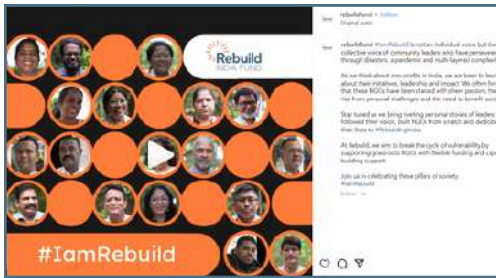
- Mr. Raghu N. Hubballi
- Mr. Mallappa S. Managanvi

The following impact data presented since 2023-2024 FY

The Dasra Rebuild India Fund has yielded significant, multi-faceted impacts across our operations and programs:

- **Enhanced Fundraising Capacity:** The unrestricted grant allowed us to hire a dedicated fundraising team, dramatically increasing territorial donor contributions from 15% to 45%.
- **Strengthened Infrastructure:** Crucially, the grant enabled us to acquire land for our own building, establishing a "one roof, many services" model that provides comprehensive support for Persons with Disabilities (PwDs).
- **Expanded Early Intervention (EI) Impact:** Our EI centers are now better equipped, serving more beneficiaries. This has profoundly impacted children's physical development and growth, and importantly, empowered parents to apply therapeutic models, preventing secondary complications.
- **Organizational Professionalization:** The grant has been instrumental in refining our policy-making and internal systems, fostering a more professional and mature organizational structure, which enhances our recognition by funding agencies and government bodies.
- **Synergy with Previous Initiatives:** This development seamlessly connects with our prior efforts in organizational change management, specifically the Niranthara program supported by Dhvani Foundation, Bengaluru, ensuring a cohesive and sustainable growth trajectory.

HARNESSING GROWTH TRANSFORMATIVE LEARNINGS & GROWTH TRAJECTORIES





STAFF WELFARE INITIATIVE

"SAHAYOG"



PROJECT BRIEF

'Dhwani Foundation "NGO Partner Staff Welfare Fund' is a joint initiative between Caring Friends, a private Donor and Dhwani Foundation to support grassroots NGOs like Ashadeepa to set up 'Staff welfare revolving fund scheme'.

This initiative aims at building a corpus fund with an initial contribution by Caring Friends and another Donor through Dhwani foundation as a help along with a minimum contribution from the recipient NGO's end.

This initiative is hoped to grow over the period to support more employees with increased loan limits by engaging staff and any other interested donors through partner NGOs effort.

The primary aim of the scheme is to enable small NGOs to support staff members of their organizations. The employees of an NGO devote their lives to serving the marginalized communities and are the backbone of any institution. The smaller NGOs continue to find it a challenge to build supportive welfare schemes for their employees when their employees in need of financial assistance for certain emergencies or important part of their lives. This initiative proposes to consider supporting long serving employees of an NGO through short term loans for them to tide over emergency fund requirements.



Project Sponsor

Dhwani Foundation & Caring Friends, Mumbai
-One time grant assistance



Project Location

Ashadeepa ILKAL, Bagalkote



Project Duration

1st June 2023 to 1st June 2028
"Grant provided to address the urgent needs of staff members."



Target beneficiaries

-Staff served more than three years from top to bottom level.



Beneficial

- Ms. Paramma Kuri
- Ms. Savitri Urf Amruta Hiremath
- Ms. Sainajbhi Mulla
- Mr. Prabhu Ramadurg
- Mr. Husensab Mudagall
- Mr. Aminappa Hosamani
- Mr. Hanumanth Talawar
- Ms. Haseenabanu Hawaldar
- Mr. Mallappa S. Managanvi

Impact Summary

The "Sahayog Staff Welfare Fund" provides timely financial assistance to respective eligible staff working with Ashadeepa since many years with dedication and contributing their valuable time for cause the organization works for, empowering those staff to meet urgent needs such as:

Medical treatments for aged parents

School fees for their kids

Constructing basic amenity like toilet and bathrooms

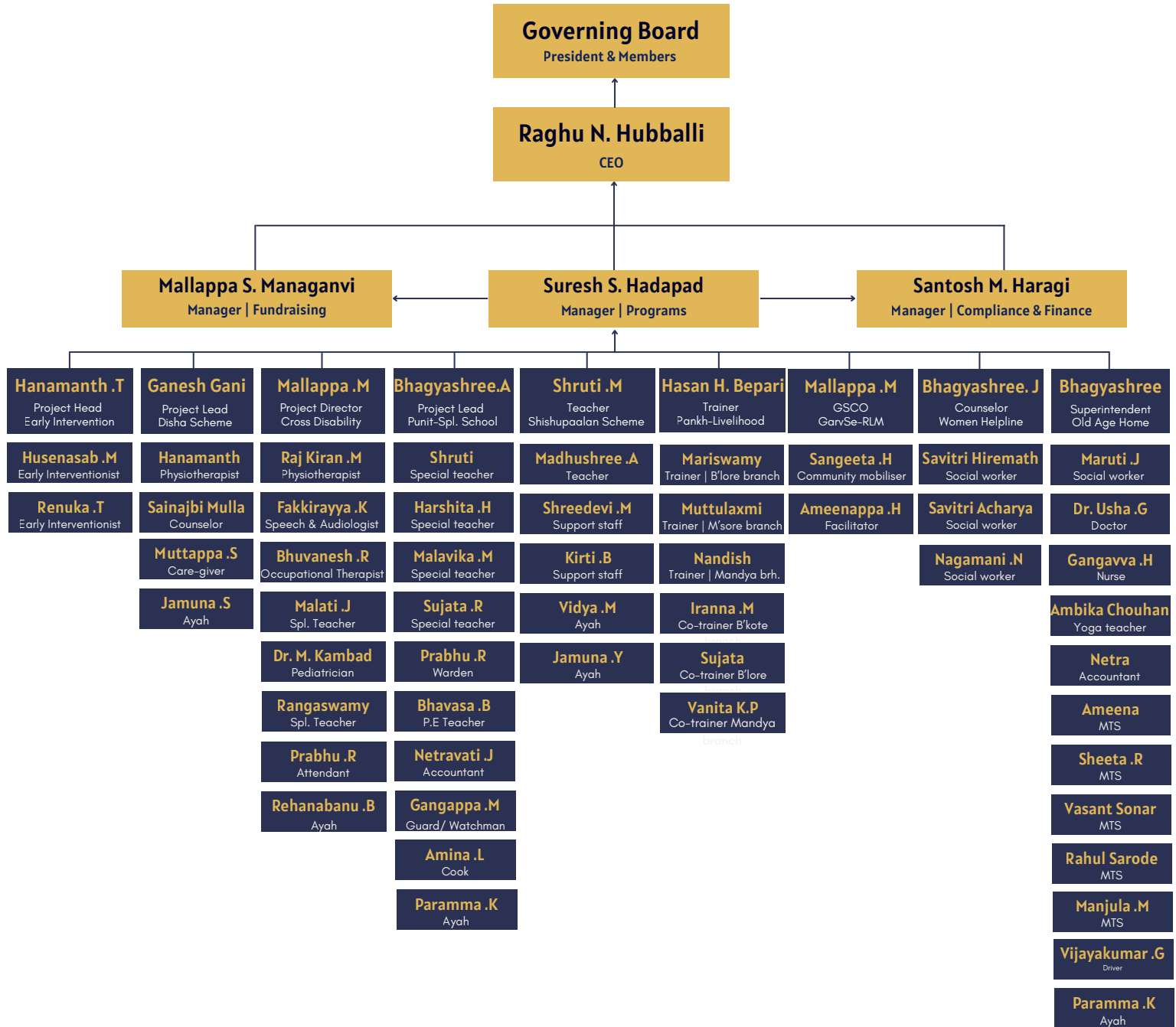
celebrate rituals with aspiration of gold purchases or gold loan repayments.

So far, ten staff members have distributed this loan with right cause investment and paid back with ZERO interest and nurturing this grant as corpus fund for staff welfare activities in future.

-Any individuals can contribute for developing this grant for expanding and benefitting with more numbers of staff in future.

ORGANOGRAM

-Structure of an organization



Prior to induction, all prospective board members agree to the established terms of service, which are provided pro-bono. This process ensures each member acts with independence and has no prior relationships with other board members, preventing conflicts of interest.



As an entrepreneur for over 30 years, Mr. Chandru is a role model for PwDs. He serves as the president of the Ashadeepa organization, which received a state award under his leadership from the Karnataka State Government. He is also recognized by various organizations for his outstanding contribution.



Mr. Rahaman Buvaji, a native of Sulebhavi, is known in the Bagalkot district for his exceptional work with people with disabilities during the COVID-19 pandemic. His awareness and sensitization efforts earned him a Karnataka State Award in 2021. He also helps Ashadeepa by building a donor network to ensure the organization's sustainability.



An advocate in Bagalkote, Mrs. Sujata Kori is the Vice-President of the Ashadeepa organization. Motivated by her own daughter's intellectual disability, she is dedicated to serving the disability sector.



Mr. Sunil is a businessman with a locomotor disability. He is dedicated to helping people with disabilities by building donor networks & organizing people. He contributes to the organization's internal processes & systems, aspiring to create resilience and support for their work.



A man on a mission, Mr. Raghu is the founder and CEO of Ashadeepa organization. As a person with a disability, he is a powerful role model for the differently-abled. He earned the prestigious Karnataka State Award for his outstanding contributions to the disability sector. His work has been widely recognized, a testament to his unwavering dedication.



Mr. Chandrashekar S, a native of Bengaluru, he comes from rich experience of 17 years as a human resources manager, including many years at Akamai Technologies. His expertise in HR management is instrumental in enhancing employee engagement and streamlining the organization's internal and external processes.



Mr. Huseenasab Mudagall is a board member and early interventionist for the EI & EE Project. He received the "Best Social Worker Award" from the ABM organization for his dedication to helping children with disabilities and their families integrate into mainstream education.

OUR ADVISORY BOARD

-A force of experience, a source of insight

"Guiding our work with invaluable insights, our advisory board is instrumental in driving progress and maximizing our impact in the community."

Mrs. Gouramma S. kashappanavar
Ex-MLA, leader

Shri. Sachin Magnur
Businessman

Mrs. Dr. Sunita A. Kathare
Doctor

Shri. Basavaraj Navali
Businessman

Shri. Chandrahas. Herur
Prop. Amarjyoti Exports

Parashuram Rajolli
President of Sarva Sindhu Melodies

Shri. Venkatesh Saka
Joint-secretary FIGSI

Shri. Mahantesh Pochagundi
Social worker

Shri. Raju M. Bora
Prominent Person

Shri. Chandrashekar Mali
Ex Member Rotary Club

Mrs. Jayashree Salimath
Prominent Person

Shri. Suleman Chopdar
Press Reporter

Mrs. Shobha Amadihal
Ex-Member, City Corporation Ilkal

Mrs. Savita Hiremath
Social worker

Shri. Abdulrazak Tatagar
ILKAL Taluk Block President, Congress Party

Shri. Pavadeppa Chalawadi
Social worker

Shri. Dr. Mahantesh Akki
Doctor

Shri. S. S. Reshmi
Social worker & School Head Master

Shri. Praveen Hoolageri
Social worker

Shri. D. N. Sugandhi
Social worker

Shri. B. Babu
APD India, Bengaluru

Shri. Mahantesh Gorajanal
Press Reporter & Social worker

Shri. Arunkumar. S
President Vice of Needy Foundation B'lore

Shri. Ramasa T. Katwa
Social worker

Shri. Basavaraj Sajjan
Social worker

Shri. Manjunath Hosamani
Social worker

Shri. Ningappa G. Sajjan
Social worker

Shri. Ramesh Talawar
Retd. DDWO

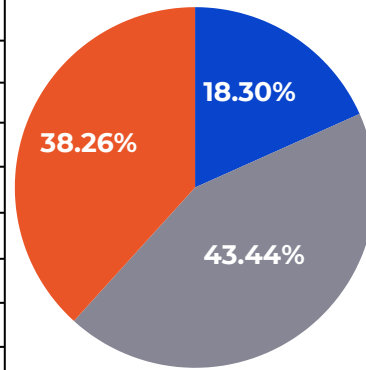
Shri. Raghavendra Jogin
Social worker

Shri. Ashok Katwa
Social worker

OUR HNI'S DONERS DETAILS

"Our deepest thanks go out to all the HNIs and individual donors who have supported our cause with their valuable cash and in-kind donations."

SL. No.	Name of the HNIs	Donation in INR
1	Dr. Sunita A. Kathari	440000
2	Mr. Lakshman B Poojari	300000
3	Mr. Gopal I. Malekoppa	112000
4	Mr. Ramanan Ravikumar	100000
5	Mr. Chandrashekhar Gajendragad	100000
6	Mr. Shivananda S Kori	100000
7	Mr. Sharanappa Hunakunti	100000
8	Mr. M S Gorbali	100000
9	Mr. Rupeshkumar D Nagari	100000
10	Mr. Shrishail S. Sunagad	100000
11	Ms. Trupti D Salimath	100000
12	Mr. Sakarappa	100000
13	Mr. Sanganbasappa S Reshmi	99000
14	Mr. Devendra Channi	90000
15	Mr. Javidhusen Mulla	86000
16	Mr. Prakash B Achanur	86000
17	Mr. Amaresh Shivappa Hosur	80000
18	Ms. Vijayalakshmi	80000
19	Ms. Kethsia Mathew	80000
20	Mr. Dominic Thomas	75000
21	Mr. Devendra Channi	70000
22	Mr. Nagaraj B Kotnis	70000
23	Mr. Kashimali sha Makandar	70000
24	Ms. Aishwary Goudar	51000
25	Mr. L R Naik	50000
26	Mr. Pranesh Vittappa Dhotre	50000
27	Ms. Madhu M Kadlimatti	50000
28	Mr. Sateesh Kopparad	50000
29	Ms. Madhu M Kadlimatti	50000
30	Mr. Sateesh Kopparad	50000
31	Sankya Enterprise	50000
32	Mr. L R Naik	50000
33	Mr. Prabhulingayya I. Hiremath	37000
34	Mr. Shrishail P Nidagundi	25000
35	Mr. Amaresh Shivappa Hosur	19000
36	Ms. Shivaleela S Bagewadi	10000
37	Mr. Shrishail S. Sunagad	10000
38	Mr. Sakarappa	10000



Government Grant
2809069.00

Private Funding
662279.00

HNIs
5870675.00

Employee Salary : 6732600 INR

Program Costs : 4924208 INR

Admin Cost : 2546813 INR

Total Receipt : 16693317 INR

Total Expenditure : 16452357 INR

Potential meets purpose

Thippeswamy Vadde, a young man from a small village in Andhra Pradesh, has faced life with remarkable resilience. Born with a locomotor disability, he grew up as the eldest of four siblings in a family where his aging parents were unable to work. Despite completing his education, financial challenges and lack of opportunities in his village left Thippeswamy struggling to find a job to support his family. Amid this difficult period, one of his friends informed him about the PANKH program. Seeing it as a beacon of hope, Thippeswamy enrolled in the program, which offered him a 45-day training course covering Retail Management, English skills, Digital skills, and Soft Skills. During the training, Thippeswamy actively participated, demonstrating enthusiasm and determination to improve himself. His hard work paid off when he attended an interview at Shell E Power Petrol Bunk and secured a position as a Customer Service Associate. Today, Thippeswamy enjoys his work and takes pride in being able to support his family. He is grateful to the PANKH program and Angelone for transforming his life and providing him with the skills and confidence to succeed. Thippeswamy's story is a testament to the power of perseverance and the impact of opportunities for changing lives.



From challenge to triumph



Born with low vision in Bidar, Priyanka navigated a childhood and young adulthood filled with obstacles, from academic struggles to a lack of career opportunities for people with disabilities. Her unwavering determination led her to the Pankh Program, a 45-day training initiative that became a turning point in her life. The program equipped her with crucial computer and soft skills, transforming her confidence and employability.

With her new skills, Priyanka secured a position as a Computer Operator at PES Hospital. This job not only provided her with financial independence but also a profound sense of pride and purpose. Her story is a powerful testament to resilience and the life-changing impact of skill development programs like Pankh, which she credits with transforming her journey from one of struggle to one of success.

Celebrating lives changed

A powerful example of dedication and partnership, Sheela's story highlights her journey from facing significant challenges to becoming a success in her community. With guidance from Ashadeepa Samsthe, she enrolled in the Pankh Program's 45-day livelihood training. Sheela's extraordinary commitment led her to not only complete the program but also be recognized as the "Best Worker" in her cohort.

Today, she works successfully at A One Super Market and stands as an inspiration in her hometown of Basaralu, Mandya. Her journey is a testament to the transformative power of skill development and strategic community partnerships between Pankh and Ashadeepa Samsthe.



The power of one life, transformed



The success story of R Hemanth Kumar is a powerful testament to resilience and the unwavering human spirit. At the age of 25, a significant health challenge led to a physical disability, but Hemanth refused to let this define him.

With a vibrant spirit and a strong desire to learn, he secured a promising job at SIYA Technologies. His professional success is a source of inspiration, proving that one's potential is not limited by physical challenges. As a taxpaying professional and a role model for others with disabilities, Hemanth's journey highlights the transformative power of a supportive community. He credits Ashadeepa Samsthe for providing the crucial guidance that helped him achieve his goals.

Community care, lifelong impact.

Eramma, a 9-year-old girl with an intellectual disability, struggled with basic fine motor skills such as grasping objects, holding a pencil, and buttoning her clothes. Her teacher, Sainaja, recognized these challenges and introduced daily grasping activities using colorful plastic rings to help improve her hand coordination. In the beginning, Eramma was unable to hold the objects, but through consistent practice and the teacher's patient guidance, she gradually began to show signs of improvement.

After three years of continuous effort, Eramma successfully grasped a small green ring for the first time—a simple yet powerful moment that marked the beginning of her journey toward independence. This achievement brought a proud smile to her face and tears of joy to her teacher's eyes. With increased confidence, Eramma is now attempting to hold a pencil, showing that even small milestones can pave the way for greater progress. Her story is a testament to the impact of perseverance, support, and belief in a child's potential.



Beyond barriers, into a brighter future

Born to quiet moments, Varthana Bendigeri's early years were a source of worry for his parents as he neither walked nor spoke by the age of three. Their concern turned to hope upon discovering early intervention services. They enrolled Varthana in programs that included speech therapy, occupational therapy, and play-based learning.

With dedicated support, Varthana's world began to open. Shortly after his third birthday, he took his first steps and soon filled their home with words like "Mama" and "Papa." By age four, he was ready for Montessori school, where he blossomed.

Today, Varthana is a bright, friendly, and confident student. His journey stands as a powerful testament to the impact of early intervention, proving that with the right care and support, every child can find their voice and footing.



The power of one life, transformed



Satvik Raybagi's parents watched with growing worry as their son was slower to speak and walk than other children. A fear that he might never catch up filled their hearts. Their turning point came at a local Anganwadi center, where a worker named Mrs. Savita introduced them to Ashadeepa Samsthe.

Daily visits to the institute became a world of hope for Satvik and his grandmother. A team of dedicated therapists created a personalized program for him, including speech therapy, occupational therapy, play-based learning, and physiotherapy. The one-hour sessions grew into a full day of growth and discovery.

Within two years, the silence in Satvik's life began to fade. He was walking properly and speaking a few words, transforming his parents' fear into immense joy. Satvik's journey is a powerful testament to how early intervention and dedicated support can replace worry with hope, celebrating the unique potential in every child.

Community care, lifelong impact.

Mithun Kumar Vagga, the youngest of three children, was born into a hardworking family—his father a lorry driver, and his mother a homemaker. From an early age, Mithun faced serious developmental issues. He was unable to walk or eat properly, and his condition worried his parents deeply.

With support from the local Anganwadi, Mithun was referred to Ashadeepa's Early Intervention Centre which is actively engaged in community level offering community-based early intervention services, where our team immediately intervened. He was taken to a government hospital and diagnosed with severe physical delays.

Our team provided regular home-based care for four months. Slowly, Mithun began improving, he started eating well, walking, and became more active each day.

Today, Mithun is a healthy, active child, and his parents are filled with joy and hope. His transformation stands as a powerful example of early intervention and community care under Cross-Disability Project.



Where care sparks growth.



In a modest home shared with grandparents, an elder brother, and two children, little Afsana Nadaf was facing a difficult challenge. Born with a cleft lip, she struggled to eat properly, and her health was rapidly declining. Her father worked as a driver, and her mother managed the household—but they were unsure how to get Afsana the help she desperately needed.

When Ashadeepa's team visited the home of Afsana, her condition was critical. She was weak and unable to take in proper nutrition. Our staff immediately took her to a government hospital, where a pediatric specialist confirmed that she needed urgent surgery. A referral letter was prepared for a specialized hospital in Hubballi.

With guidance and support from our team, the family took Afsana to Hubballi, where she successfully underwent surgery. Today, Afsana is thriving. She eats well, is active, and is developing like any other healthy child. Her family is overjoyed and thankful for the timely intervention that changed their daughter's life.

Community care, lifelong impact.

Siddhanta Veerapuramath, a child with an intellectual disability, joined the Punita School at Ashadeepa Institute facing major difficulties in recognizing letters, forming words, and writing sentences. His lack of focus, confidence, and fine motor control made writing a frustrating task. Understanding his challenges, Teacher Prabhu adopted a child-centered, joyful learning approach using visual aids, songs, tracing in sand, and play-based activities. By incorporating multiple intelligences and celebrating every small achievement, he created a motivating and supportive environment.

Within just 2-3 months, Siddhanta began identifying and writing letters. In six months, he progressed to writing simple words with minimal help. This transformation amazed everyone—teachers, parents, and peers alike. Siddhanta's story is a powerful example of how the right teaching strategies, combined with patience and encouragement, can unlock the hidden potential in every child. Teacher Prabhu's dedication has not only changed Siddhanta's life but also serves as an inspiration to educators everywhere.



Where care sparks growth.



Ashwit Talewad, son of Hanamant and Nimamala Talewad, was born with an intellectual disability, facing challenges in both physical and cognitive development. Unlike other children, even basic tasks such as eating, brushing teeth, or getting ready for school were difficult for him. But behind his struggles was a strong desire to live joyfully, to walk, play, and connect. Noticing his difficulties, school principal Ganesh Sir took a special interest in Ashwit's development. With patience and care, he taught Ashwit one skill at a time—starting with how to wash his face, then helping him gain independence in using the toilet. These small victories became stepping stones in Ashwit's journey toward self-reliance. Socially shy at first, he gradually learned to greet others and speak basic words with confidence. Ganesh Sir's simple but consistent efforts—like teaching him a new phrase each day—opened the door for Ashwit to engage with peers and participate in group learning activities.

With visual aids, songs, games, and constant encouragement, Ashwit began recognizing letters and numbers, remembering routines, and responding actively in class. His transformation from a hesitant child into one who could smile, play, and participate was the result of deep collaboration—between a caring teacher, a supportive family, and Ashwit's own determination. Today, he can independently manage his routine, communicate socially, and take part in learning activities with enthusiasm, even winning prizes. His story reminds us that every child is unique and capable. True success comes not just from intelligence, but from opportunity, love, and unwavering support. With a nurturing environment and steady guidance, any child can overcome challenges and thrive.

Restoring hope, rebuilding families.

Drakshayini, a resident of XXXX village, turned to the Santhwana Women Helpline of Ashadeepa Samsthe, Ilkal after enduring years of physical, mental, and financial abuse from her husband. For the sake of her children and her self-respect, she could no longer remain silent. Her marriage was peaceful for the first four years. Then, everything changed when her husband began doubting character, leading to constant conflicts. The situation worsened when he forced her into sexual acts without consent, and behaved inappropriately. After years of suffering in silence, Drakshayini found the courage to seek help.

Santhwana Women Helpline took her complaint seriously. Counselors visited her home, provided counseling to overcome, and later conducted joint sessions with her husband. They firmly explained that sexual activity requires mutual consent and that forcing it is a punishable crime. The couple was guided to rebuild their relationship on mutual respect, love, and equality. With Helpline support, Drakshayini transformed from a victim of abuse into a woman aware of her rights, reclaiming her life and dignity. Her story is a testament to the power of courage and timely intervention.



Helping Women reclaim peace at home



In the village of YYYY, Sudha's life turned into a nightmare just a year after marriage. The joy of motherhood was overshadowed by relentless abuse—beatings with belts and sticks, threats of divorce, and even being cast out of her home.

Refusing to stay silent, Sudha called the Santhwana Women Helpline. Counselors acted quickly, bringing together her family and village elders. In this open forum, her husband admitted his mistakes and promised change. Sudha, choosing hope over hurt, agreed to rebuild her family on a foundation of respect.

Today, Sudha stands as a symbol of strength, inspiring women in her community to speak up, know their rights, and believe in a life free from violence.

Name of the Organization & Registered Office Address	Ashadeepa Angavikalara Sarva Abhiwruddhi Seva Samsthe Ward No. 4 Shivaji Nagar ILKAL, Hunagund Taluk, Bagalkote District, Karnataka 587125
Operational Office Address	Ward No. 3 Mahantesh Film Theatre Road Kathari Hospital Old Building ILKAL, Bagalkote District, Karnataka 587125
Nature of Registration	Society (Registered under Karnataka State Societies Registration Act 1960, founded by PwDs in 2004)
Registration Number	29/2004-05
PAN & TAN Number	AAQFA6880L ; BLRA33881B
Darpan ID (Niti Ayog)	KA/2017/0163906
12 A Certification Status	AAQFA6880LE20102 (valid from March 17, 2022, to March 17, 2027)
80 G Certification Status	AAQFA6880LF20217 (valid from March 17, 2022, to March 17, 2027)
FCRA Certification Status	094360022 (validation from August 5, 2024, to August 5, 2029)
Reg. Details under PwD Act-2016	094360022 (validation from December 18, 2021, to December 18, 2026)
Reg. Status of CSR-1	CSR00005690 (date of registration May 13, 2021)
Details of Bank Account	64025247183, IFSC: SBIN0040312 MICR: 5870021 ILKAL Branch
No. of Board Members	07, diverse board combination of men and women came from lived experience
Name of the President	Mr. Chandru Basappa Appaji Contact No: +91 9449810993
Name of the Secretary/CEO	Mr. Raghu Narasingasa Hubballi Contact No: +91 9986509910
Telephone No. & Email ID	08351-200085 ; contact@ashadeepa.org ; ceo@ashadeepa.org
Recognitions/Affiliations	As a testament to our commitment to transparency and public accountability, Ashadeepa is proud to have received the GuideStar India "Platinum Seal" of Transparency. And, also recognized and affiliated by Credibility Alliance .
Awards and Accolades	1. In a recent ceremony in Delhi, Ashadeepa was honored with the Times Now "Amazing Indians" Award 2025 for its exemplary work in the disability sector, with a special focus on children with disabilities and developmental delays, presented on 11 th Aug 2025. 2. In recognition of its exemplary work, Ashadeepa was honored with the Karnataka State Award for its services in the disability sector. 3. The Karnataka State Award was conferred upon Mr. Raghu N. Hubballi on December 3, 2016, in Bangalore, in recognition of his outstanding contributions to the Disability Sector, presented on the occasion of 3 rd Dec World Disability Day.
Networking & Membership	<ul style="list-style-type: none"> Member of Bagalkote District Local Level Project Committee (LLC). Member of Disability NGO Alliance (DNA) Karnataka State. Member of selection committee of VRW, URW, MRW ILKAL Municipal Corporation ILKAL. President of Ashakirana Multi-purpose Cooperative Society (Bank) ILKAL. State Secretary of Karnataka Angavikalara Rajya Okkota (KARO) Member of Voice of Needy Foundation (VNF), Bengaluru
Technology we use	Goonjan MIS, P3 MIS, Leaf, Canva Pro, Tally & PFMS Portal
Links of Social Media, we presence	<p>Website https://ashadeepa.org</p> <p>Facebook https://www.facebook.com/ashadeepasamsthe/</p> <p>YouTube https://www.youtube.com/channel/UC4001oohHdm24iAG0uscjA</p> <p>Instagram https://www.instagram.com/ashadeepasamsthe/profilecard/?igsh=OWJocnc3aWhuNzFo</p> <p>LinkedIn https://www.linkedin.com/in/ashadeepa-samsthe-51a583381/</p>

ದಿಶಾ ಕಾರ್ಯಕ್ರಮದ ಫಲಾನುಭವಿಗಳಿಗೆ ಚೆಕ್ ವಿತರಣೆ

ಇಳಕಟ್ಟು : ಆಶಾದೀವ
ಅಂಗವಿಕಲರ ಸರ್ವ ಅಭಿವೃದ್ಧಿ
ಸೇವಾ ಸಂಸ್ಥೆ ಮತ್ತು ದಿ
ನ್ಯೂಪನಲ್ ಟ್ರಸ್ಟ್ ನ್ಯೂ ದೆಹಲಿ
ಇವರ ಸಂಯುಕ್ತ ಆಶ್ರಯದಲ್ಲಿ
ಸ್ಥಳೀಯ ಸಮಿತಿ ಲೋಕಲ್
ಕಮಿಟಿ ಸಭೆಯ ಕಾರ್ಯಕ್ರಮ
ಪ್ರಮುಖೀಕೃತವಾಯಿತು.
ಈ ಒಂದು ಸಭೆಯ
ಅಧ್ಯಕ್ಷತೆಯನ್ನು ಶ್ರೀಮತಿ
ಧೂಪದ ಸ್ಥಳೀಯ ಸಭೆಯ



ಹದಸುರಾದ ನಿಮಿತ್ತಾ ಹೀಗೆಮಹಾಲಯಿಕಾ
 ತಲೆನಡೆದ.ತಿವಲೇನಾ ಹೀಗೆಮಹಾಲಯಿಕಾ
 ಬಲೆನಡೆದ.ತಲಾಡಿದ ಸುಸ್ಥಾಪಕ ಅಧ್ಯಕ್ಷರಾದ
 ದಯಾ ಮುಖ್ಯಸ್ಥ ಸುಸ್ಥಾಪಕಾಂಗವರ್ತಿ ಯಾದ
 ಮಹೇಶ್ ಕಾರ್ ಪುನಸ್ಕರಿಸಿದ. ಸಂಕಲ್ಪ ಕೂಡಿಸಿದ.
 ಮಲ್ಲಪ್ಪ ಕುಂಬಾರ. ವಹಿಸಿಕೊಂಡಿದ್ದರು ಈ
 ಸ್ಥಳ. ಮಾನ್ಯರಲ್ಲಿ ಹೊಸಗುಟ್ಟು ನೀಡುವ ಮುಖಾಂತರ
 ಗ್ಯಾಲರಿಕಲಾಯಿದರು.

ಈ ಕಾರ್ಯಕ್ರಮವನ್ನು ಉದ್ಘಾಟಿಸಿ ಮಾತನಾಡಿದ
 ದ್ರೇಮಕ ಕಂಠಮುಖ್ಯಾಧಿಕಾರಿ ವ್ಯಕ್ತಿ ಎಳೆಗಯ ಬಗ್ಗೆ
 ಪ್ರೀತಿಯು ಕಂಠವೆಂಬುದನ್ನು ಮನಗೊಳಿಸಿದ. ಬಂದ
 ಕಾರ್ಯಕ್ರಮದಲ್ಲಿ ಮತ್ತೆ ಪ್ರತಿನಿಧಿಯರು ಕ್ಷೇತ್ರಕ್ಕೆ
 ಮಕ್ಕಳು ಬರುವ ಕಾರ್ ಮಾಡಿ ಎಂದು ಸಲಹೆ
 ನೀಡಿದರು. ಮುಂದುವರಿದು ಮಾತನಾಡಿದ ನಾಜ್ಜಿ
 ಕಚೇರಿ ಭೂಪದಕ ಎಲ್ಲಾ ಕಾರ್ಯಕ್ರಮದಲ್ಲಿ ಮಕ್ಕಳು
 ಪಾಲ್ಗೊಳ್ಳುವಂತೆ ಮಾಡುವ ಕಾರ್ಯಕ್ರಮ ರೂಪಗೊಂಡಿತು.

ಪ್ರವೇಶಿಸುವಂತಹ ನೀವು ಶಿಕ್ಷಕರಾದವರು
ಮಾಡಬೇಕೆಂದು ಹೇಳಿದರು.
ನಮ್ಮಾತನ ಆದೇಶದಂತೆ ರಜನು ಹುಟ್ಟಿಕೊಳ್ಳುವುದು
ದಿಶಾ ಕಾರ್ಯಕ್ರಮದ ಬಗ್ಗೆ ನಮ್ಮ ಸ್ವಾಮ್ಯವಾಗಿ
ಬಂದಂತಹ ಪಾಲಕರಿಗೆ ತಿಳಿದನ್ನು ಮತ್ತೆಕಾರಣ
ಕಾರ್ಯಕ್ರಮಗಳು ಸಹಿಯಾದುದನ್ನು ನಿರ್ದಿಷ್ಟ
ಸಮಯ ಸಹಕಾರ ಯಾವಾಗಲೂ ನಮ್ಮ ಸ್ವಯಂ
ಮೇಲೆ ಕಠಿಣವೆಂದು ಮನಗೊಳಿಸುವುದು.
ಇದೇ ಸಂದರ್ಭದಲ್ಲಿ ದಿಶಾ ಕಾರ್ಯಕ್ರಮದ
ಫಲಾನುಭವಿಗಳಿಗೆ ಚಿಕ್ಕ ವಿಶಯವೆಂದು, ದಿಶಾ
ಕಾರ್ಯಕ್ರಮದ ಸಂಯೋಜಕರಾದ ಗಣೇಶ
ಗಣಿ. ಸ್ಟುಡಿಯಂವಾರದ ಅಭ್ಯಾಸ ನಗರ.
ಪಾಪಮುಕ್ತ ತಳವಾರ, ಮುಖ್ಯ ಸಂಕೇತವಾದ
ಬದವಾಣಿ ಸಾಕ್ಷಿ ಉಪಸ್ಥಿತವಿದ್ದು, ಕಾರ್ಯಕ್ರಮದ
ವಿವರಣೆ, ಸಂವೇದನೆ ಹೇಳಿದರು. ಸ್ವಾಗತ ಕಾರ್ಯಕ್ರಮ
ಅಭ್ಯಾಸ ನಗರ. ವಂದನಾರ್ಪಣೆ ಗಣೇಶ ಗಣಿ.

ಇಂದು ಮಧ್ಯರಾತ್ರಿ ಧ್ವಜಾರೋಹಣ,
ಸತ್ಕಾರ, ಸಾಂಸ್ಕೃತಿಕ ಕಾರ್ಯಕ್ರಮ

ಗಡಿನಾಡ ಕ್ರಾಂತಿ ವರದಿ :

ಇಳಕೆರೆ: ನಗರದ ಆಡಾಯ್ತಿನ ಆಂಗನವಾಡಿ ಸರ್ಕಿ ಅಧ್ಯಕ್ಷರು
ಸೇವಾ ಸಂಸ್ಥೆ ಮತ್ತು ಆಡಾಯ್ತಿನ ವಿಶೇಷ ಅಧಿಕಾರದ ವಿವರಗಳನ್ನು
ಸಹಕಾರ ಸಂಘದ ಸಹಾಯಕರಾದ 77ನೇ ಸ್ಥಾನದಲ್ಲಿರುವ
ಆಂಗನವಾಡಿ ನಗರದ ವಾಡಾ ನಂ.2, ಕುಲಕರ್ಣಿ ಪೇಟೆಯಲ್ಲಿರುವ
ದಿಶಾಂತರದ್ದಾಗಿ 3.4 ರಂದು ರಾತ್ರಿ 8ಕ್ಕೆ ವಿವರ ಸಾಂಸ್ಕೃತಿಕ
ಕಾರ್ಯಕ್ರಮಗಳು, ಯೋಜನೆಯ ಸತ್ಕಾರ, ಮಧ್ಯ ರಾತ್ರಿ 12ಕ್ಕೆ
ದ್ವಿತೀಯದಿನದ ಕಾರ್ಯಕ್ರಮ ಜರುಗಿದ ಎಂದು ಸಂಸ್ಥೆಯ
ಸಂಸ್ಥಾಪಕ ಅಧ್ಯಕ್ಷ ರಘು ಹುಲ್ಲುಗಿ ತಿಳಿಸಿದ್ದಾರೆ.

ಸಮಾರಂಭದಲ್ಲಿ ಇಳೇಲಿ, ಚಿಕ್ಕರಗಿ ಸಂಸ್ಥಾನಮಂಡ
ಗುರುಮಹಾಂತ ಸ್ವಾಮೀಜಿ ಸಾನಿಧ್ಯ ವಹಿಸುವರು. ಮಾಜಿ ಶಾಸಕಿ,
ಅಶಾಂತಿಜಿ ಸಂಸ್ಥೆಯ ಗೌರವಾನ್ವಿತ ಗೌರಮ್ಮ ಎಸ್. ಶಾಶ್ವತವರ
ಅಧ್ಯಕ್ಷತೆ ವಹಿಸುವರು. ಶಾಸಕಿ, ಶಾಸ್ತ್ರ ಮಿಶ್ರಕೆವೆಲೆ ಲಿಂಗನಾಥ
ಅಧ್ಯಕ್ಷರಾಗಿ ನಿಗಮದ ಅಧ್ಯಕ್ಷ ವಿಜಯಾನಂದ ಎಸ್. ಶಾಶ್ವತವರ
ಧ್ವಜಾರೋಹಣ ನೇರವೇರಿಸುವರು.

[illegible]

**ವಿಶ್ವ ಮೆದುಳು
ಪಾರ್ಶ್ವವಾಯು ದಿನಾಚರಣೆ**



ಇಳಕಲ್: ಮೆದುಳು ಪಾರ್ಶ್ವವಾಯು ವೆದಂತಿಗೆ ಸಂಬಂಧಿಸಿದ ಕಾಯಿಲೆಯಾಗಿದೆ ಈ ಒಂದು ಕಾಯಿಲೆಯು ಮಗುವಿಗೆ ದೈಹಿಕವಾಗಿ ಪರಿಣಾಮ ಬೀರುತ್ತದೆ ಇದನ್ನು ಸರಿಪಡಿಸುವಂತದ್ದಾಗಿದೆ ಇದಕ್ಕೆ ನಾವು ಫಿಜಿಯೋ ಥೆರಪಿ ಮಾಡಿಸುವ ಮುಖಾಂತರ ಸರಿಪಡಿಸಬಹುದು ಮತ್ತು ಪೋಕರಾದವರು ಪ್ರತಿಯೊಂದು ಮಗುವನ್ನು ಸರಿಯಾಗಿ ಗಮನಿಸಿ ಪ್ರತಿಯೊಂದು ಚಿಕಿತ್ಸೆಯನ್ನು ನೀಡುವಂತಹ ಕಾರ್ಯವನ್ನು ಮಾಡಬೇಕು ಎಂದು ಕಾರ್ಯಕ್ರಮದ ಅಧ್ಯಕ್ಷತೆ ವಹಿಸಿದ್ದ ಉಪನ್ಯಾಸಕಿ ಶಂಕ್ರಮ್ಮ ದೂಫದ ಮಾತನಾಡಿದರು.

ನಗರದ ಆಶಾದೀಪ ಅಂಗವಿಕಲರ ಸರ್ವ ಅಭಿವೃದ್ಧಿ ಸೇವಾ ಸಂಸ್ಥೆ ಮತ್ತು ದಿ ನ್ಯಾನ್ಸ್ ಟ್ರಸ್ಟ್ ನ್ನೂ ದೆಹಲಿ ಇವರ ಸಂಯುಕ್ತ ಆಶ್ರಯದಲ್ಲಿ ವಿಶ್ವ ಮೆದುಳು ಪಾರ್ಶ್ವವಾಯು ದಿನಾಚರಣೆ ಪ್ರಯುಕ್ತ ನಡೆದ ಕಾರ್ಯಕ್ರಮದಲ್ಲಿ ಅವರು ಮಾತನಾಡಿದರು.

ಆಕಾದೀಪ ಸಂಸ್ಥೆಯ ಸಂಸ್ಥಾಪಕ ಅಧ್ಯಕ್ಷ ರಘು ಮುಖ್ಯ ಮಹತನಾಡಿ ದಿಶಾ ಕಾರ್ಯಕ್ರಮದ ಬಗ್ಗೆ ಮತ್ತು ವಿಶ್ವ ವೇದಗಳು ಪಾರ್ಶ್ವವಾಯು ಬಗ್ಗೆ ಸವಿಸಾರವಾಗಿ ಬಂದಂತಹ ಪಾಲಕರಿಗೆ ತಿಳಿಸಿದರು ಮತ್ತು ಇಂತಹ ಕಾರ್ಯಕ್ರಮಗಳು ನಡೆಯುವುದಕ್ಕೆ ನಿಮ್ಮಿಂದ ಸಹಾಯ ಸಹಕಾರ ಯಾವಾಗಲೂ ನಮ್ಮ ಸಂಸ್ಥೆಯ ಮೇಲೆ ಇರಲೆಂದು ಮನವಿ ಮಾಡಿದರು.

ನಿರ್ಮಲಾ ತಳೆವಾಡ, ಶಿವಲೀಲಾ
ಹಿರೇಮಠ, ಲಲಿತಾ ಹಿರೇತೋಟದ,
ಸಹಕಾರ್ಯದರ್ಶಿ ಹುಸೇನಸಾಬ್
ಮುದಗಲ್, ಸಂಗಪ್ಪ ಕೊಡ್ಲೂರ, ಮಲ್ಲಪ್ಪ
ಕುಂಬಾರ, ಹನುಮಂತ ತಳವಾರ,
ಮತ್ತು ಸಂಕೋನವರ, ಜಮುನಾ ಸಾಕ್ರೆ,
ಉಪಸ್ಥಿತರಿದ್ದರು. ಅಕ್ಷಾಸಾ ನಗರಿ
ಸ್ಥಾಪಿಸಿದರು, ಗಣೇಶ ಗಣಿ
ವಂದಿಸಿದರು, ಸುರೇಶ ಹಡಪದ
ನಿರೂಪಿಸಿದರು.



ಮಧ್ಯರಾತ್ರಿ ಮಳೆಯಲ್ಲಿ
ಧ್ವಜಾರೋಹಣ

ಅಕ್ಕಲೆ: ಇಲ್ಲಿಯ ಅಹಾಸಿದ ಅಂಗವಕರರ ಸರ್ವ ಅಭಿವೃದ್ಧಿ ಸೇವಾ ಸಂಸ್ಥೆಯ ವಿದ್ಯಾರ್ಥಿ 12 ಗಂಟೆ ಸುಂದರ ಹೆಣೆಯಿದ್ದು 78 ಸೆ. ಸ್ವಾತಂತ್ರ್ಯ ಸಮದ ದಾಖಲಾತಿ ಹಾಗೂ ರೇಕಾರ್ಡ್ ಮಾಡಿದ ಶಿಲೆಯಿಂದ ಅಭಿವೃದ್ಧಿ ಅಭ್ಯರ್ಥಿ ಹಾಗೂ ಶಾಸಕ ವಿಷಯಸಂದ ಕಾರಪತ್ರರ ನಡವಳಿಕೆಯಿದೆ.

ಹುಡುಕಾ ಗಾಂವಿನ ಹಾಗೂ ಕಾಡಾಡಾ ಸಾಂಸ್ಕೃತಿಕ ಅಂದವರ ಧಾರವಳಿಕೆ ಸಂಸ್ಥೆಯ ಅಭ್ಯರ್ಥಿ ಕರೆಯಿ ಅಪ್ಪಾಜಿ ಹುಡುಗನು ಸಲ್ಲಿಸಿದನು. ನಂತರ ಕಾರ್ಯಕ್ರಮದ ಗಾಂವಿನ ಹುಡುಗರ ತ್ರಿಗಲ ಮಾಜಿ ಸಂಸ್ಥೆಯ ಸದಸ್ಯರಾದ. ಸಂಸ್ಥೆಯ ಸಂಸ್ಥಾಪಕ ಅಭ್ಯರ್ಥಿ ರವಾ ಕುಲಕರ್ಣಿ ಹುಡುಗನು, ಗಿ. ಹುಡುಗನು ಬಹು ಶಕ್ತಿಯು.



ಕರ್ನಾಟಕ ಅರಣ್ಯ ಅಭಿವೃದ್ಧಿ ಸಮಿತಿ ಅಧ್ಯಕ್ಷರು ಸಿ.ಎಸ್. ಸುಬ್ಬರಾಜು ಅವರು 12 ನಂಟಿಗೆ 75ನೇ ಸ್ವಾತಂತ್ರ್ಯೋತ್ಸವದ ಕಾರ್ಯಕ್ರಮವನ್ನು ಸಾರ್ವಜನಿಕವಾಗಿ ನಡೆಸುವುದರ ಬಗ್ಗೆ ಆಜ್ಞಾಪಿಸಿದರು.

ಗೋವಾದಲ್ಲಿ ದಸರಾ ರಿಬಿಲ್ಟ್ ಇಂಡಿಯಾ ಫಂಡ್ ಯೋಜನೆಯಡಿ ಬಲವರ್ಧನ ಕಾರ್ಯಗಾರ

ಗಡಿನಾಡ ಕ್ಷಾಂತಿ ವರದಿ :

ಇಳಕಲ್ : ಆಕಾಶದೀಪ ಅಂಗವಿಕಲರ ಸವನು ಅಭಿವೃದ್ಧಿ ಸೇವಾ ಸಂಸ್ಥೆ ಹಾಗೂ ವಾಯು ಆಫ್ ನೆಡಿ ಫೌಂಡೇಶನ್ ಜಂಟಿಯಾಗಿ ಎರಡು ದಿನ ಸಿಬ್ಬಂದಿಗಳ ಬಲವರ್ಧನೆ ಕಾರ್ಯಾಗಾರ ಗೋವಾದಲ್ಲಿ ಸಫಲವಾಗಿತ್ತು.



ಉತ್ತಮ ರೀತಿಯಲ್ಲಿ ತಿಳಿಸಿದರು.

ಕಾರ್ಯಾಗಾರದಲ್ಲಿ ಹಿರಿಯ
ತರಬೇತುದಾರ ಜಂಜಿಮಾರಿ, ಸುಮಾರಿ
60 ಜನ ಸಿಬ್ಬಂದಿಗಳ ಜೊತೆ ಸಂವಹನ
ನಡೆಸಿ, ಹತ್ತು ಜನರ ಗುಂಪುಗಳನ್ನು ರಚಿಸಿ
ಸಮಾಜದಲ್ಲಿ ಸಮಾಜಮುಖಿ ಚಟುವಟಿಕೆ
ಮಾಡುವ ಸಂದರ್ಭದಲ್ಲಿ ಎದುರಿಸುವ
ವಿವಿಧ ಸನ್ನಿವೇಶಗಳನ್ನು ಸೃಷ್ಟಿಸಿ ಅವನ್ನು
ತೋರಿಕೆ ಪರಿಹರಿಸಬೇಕು ಎಂದು ಬಹು

ಆಕಾಶೀಜ ಸಂಸ್ಥೆಯ ಸಂಸ್ಥಾಪಕ
ಆಧ್ಯಕ ರವರು ಎನ್. ಹುಬ್ಳಿ ಮಾತನಾಡಿ,
ಎನ್.ಜಿ.ಸಿ ಸಂಸ್ಥೆಗಳು ಸ್ವಲ್ಪದಿನಗಳು ಜನರ
ಜೊತೆ ನಿರಂತರ ಸಂಪರ್ಕದಲ್ಲಿರುವ ಮೂ
ಲಕ ಜನಪರ ಕೆಲಸ ಕಾರ್ಯಗಳನ್ನು
ಮಾಡಬೇಡಿ, ಸ್ವಲ್ಪದಿನಗಳ ಬಿಡುವಿದ್ದಾಗಲಿ
ಹುಬ್ಳಿಕೊಂಡಿರುವ ಎರಡು ದಿನದ ಕಾರ್ಯ
ಗಾರವನ್ನು, ಸ್ವಲ್ಪದಿನಗಳು ಸಮ ಪಯೋಗ

ಪಡೆದುಕೊಂಡು, ಸಮಾಜಮುಖಿ ಚಿಂತನೆ
ಯಡಿ ಉತ್ತಮ ರೀತಿಯಲ್ಲಿ ಕೆಲಸ ಮಾಡ
ಬೇಕು ಎಂದು ಸಲಹೆ ನೀಡಿದರು.

ಕಾರ್ಯಾಗಾರದಲ್ಲಿ ಆಶಾದೀಪ ಸಂಸ್ಥೆಯ ಇಳಕಲ್, ಬೆಂಗಳೂರು, ಮೈಸೂರು, ಮಂಡ್ಯ, ವಿಜಯಪುರ ಭಾಗದ ಸಿಬ್ಬಂದಿಗಳು ಹಾಗೂ ಬೆಂಗಳೂರಿನ ವಾಯ್ ಆಫ್ ನೀಡಿ ಫೌಂಡೇಶನ್ ನ ಸಿಬ್ಬಂದಿಗಳು ಭಾಗಿಯಾಗಿದ್ದರು.

ಹಿರಿಯ ತರಬೇತುದಾರರಾದ ಬಾಬು, ವಾಯ್ಸ್ ಆಫ್ ನೀಡಿ ಫೌಂಡೇಶನ್ ನ ಮುಖ್ಯಸ್ಥ ಅರುಣಕುಮಾರಸೇವಿರಿಂದ ತೆ ಇನ್ನಿತರರು ಇದ್ದರು. ಗೋವಾದಲ್ಲಿ ಇಳಿಕೆ ಆಕಾಶದ ಸಂಸ್ಥೆ ಸಿಬ್ಬಂದಿಗಳ ಕಾರ್ಯಾಗಾರದಲ್ಲಿ ಪಾಲ್ಗೊಂಡಿದ್ದರು.



ಶ್ರೀ ವಿಜಯಾನಂದ ಎಸ್. ಕಾಶಪ್ಪನವರ

ಶಾಸಕರು ಹುನಗುಂದ ಮತಕ್ಷೇತ್ರ

ಅಧ್ಯಕ್ಷರು ಕರ್ನಾಟಕ ವೀರಶೈವ ಲಿಂಗಾಯತ ಅಭಿವೃದ್ಧಿ ನಿಗಮ, ಬೆಂಗಳೂರು

ಮನುಷ್ಯ ಸಮಾಜ ಜೀವಿ, ಈ ಜಗತ್ತಿನಲ್ಲಿ ಘನತೆ ಗೌರವದಿಂದ ಬದುಕುವ ಹಕ್ಕು ಎಲ್ಲರಿಗೂ ಇದೆ. ಹಲವು ಕಾರಣಗಳಿಂದ ಅಂಗವೈಕಲ್ಯರಾಗಿ ವಿಕಲತೆಯನ್ನು ಮೆಟ್ಟಿನಿಂತು ತಾವು ಕೂಡ ಎಲ್ಲರಂತೆ ಸಮಾಜೋಪಯೋಗಿಗಳು ಎಂಬುದನ್ನು ಜಗತ್ತಿಗೆ ಸಾರುವಂತಹ ಶಕ್ತಿಯನ್ನು ವಿಕಲಚೇತನರಲ್ಲಿ ತುಂಬುವಲ್ಲಿ ಇಳಕಲ್ಲ ನಗರದ ಆಶಾದೀಪ ಅಂಗವಿಕಲರ ಸರ್ವ ಅಭಿವೃದ್ಧಿ ಸೇವಾ ಸಂಸ್ಥೆಯ ಪಾತ್ರ ಅತ್ಯಂತ ಪ್ರಶಂಸನಾರ್ಹ. ಶ್ರೀ ರಘು ಹುಬ್ಬಳ್ಳಿ ಹಾಗೂ ಶ್ರೀ ಚಂದ್ರ ಅಪ್ಪಾಜಿ ಇವರ ನಿಷ್ಕಲ್ಮಶ ಸ್ವಾರ್ಥ ರಹಿತ ಸೇವೆಯಿಂದ ವಿಶೇಷ ಚೇತನರ ಹಾಗೂ ನೊಂದ ವಯೋ ವೃದ್ಧರ ಮಹಿಳೆಯರ, ಮಕ್ಕಳ ರಕ್ಷಣೆಯಾಗುತ್ತಿದೆ. ಹಿರಿಯ ನಾಗರಿಕರ ಬಗೆಗಿನ ಗೌರವಾದರ , ಲಿಂಗ ಸಮಾನತೆ, ಮಕ್ಕಳ ಹಕ್ಕುಗಳ ರಕ್ಷಣೆಗಾಗಿ ಈ ಸಂಸ್ಥೆ ಮಾಡುತ್ತಿರುವ ಕಾರ್ಯ, ಸಮಾಜದ ಸ್ವಸ್ಥತೆ ಹಾಗೂ ಅಶಕ್ತ ಮಹಿಳೆಯರ ಸ್ವಾಸ್ಥ್ಯವನ್ನು ಕಾಪಾಡುವಲ್ಲಿ ಸಂಸ್ಥೆ ತೋರುತ್ತಿರುವ ಕಾಳಜಿ ಅತ್ಯಂತ ಸ್ತುತ್ಯವಾದುದು. ಈ ಸಂಸ್ಥೆಯೊಂದಿಗೆ ನನ್ನದು ನಿಕಟ ಸಂಬಂಧ, ಸಂಸ್ಥೆ ಕೈಗೊಳ್ಳುವ ಯಾವುದೇ ಸಮಾಜಮುಖಿ ಕಾರ್ಯಗಳಿಗೆ ನಾನು ಎಂದಿನಂತೆ ಸಹಕಾರಿಯಾಗಿರುತ್ತೇನೆ, ಮುಂಬರುವ ದಿನಗಳಲ್ಲಿ ಈ ಸಂಸ್ಥೆಯಿಂದ ಇನ್ನಷ್ಟು ಸೇವಾ ಮನೋಭಾವದ ಕಾರ್ಯಗಳು ನಡೆಯಲಿ ಸರಕಾರದ ಆಶಯಗಳಿಗೆ ಕೈಜೋಡಿಸಿ ಇನ್ನಷ್ಟು ಪ್ರವರ್ಧಮಾನವಾಗಿ ಬೆಳೆಯಲಿ ಎಂದು ಹಾರೈಸುತ್ತೇನೆ.

ಧನ್ಯವಾದಗಳು



Shri. K. N. Gopinath

Executive Director

Dhwani Foundation, Bengaluru

I am very pleased to see the dedication and commitment of Ashadeep under the leadership of Mr. Raghu Hubballi. They started as a small group of people with disabilities coming together for their own self-development but later it's very interesting to observe that this group has grown into formal organisation to support hundreds of people with disabilities in the community. They continue to stay at grassroots and with their strong community linkage. But highly contributing towards the sector growth.

Ashadeepa made significant contribution in addressing Early intervention, Education, Livelihood and policy influence of disability rehabilitation and development. Happy to note all the contributions that they have made in the previous year

I wish them all the very best for their future endeavours



ಶ್ರೀ. ಕೆ. ಪ್ರಭಾಕರ
ಉಪನಿರ್ದೇಶಕರು,
ಮಹಿಳಾ ಮತ್ತು ಮಕ್ಕಳ ಅಭಿವೃದ್ಧಿ ಇಲಾಖೆ, ಬಾಗಲಕೋಟೆ

ಆಶಾದೀಪ ಅಂಗವಿಕಲರ ಸರ್ವ ಅಭಿವೃದ್ಧಿ ಸೇವಾ ಸಂಸ್ಥೆ ಇಲಕಲ್ಲ ಸಂಸ್ಥೆಯವರು ಇಲಾಖೆಯ ಸಹಯೋಗದೊಂದಿಗೆ ಜಿಲ್ಲೆಯಲ್ಲಿ ಕೌಟುಂಬಿಕವಾಗಿ ಹಾಗೂ ಸಾಮಾಜಿಕವಾಗಿ ದೌರ್ಜನ್ಯಕ್ಕೆ ಒಳಗಾದ ಮಹಿಳೆಯರಿಗೆ ಧೈರ್ಯ ತುಂಬಿ ಸಮಾಜದಲ್ಲಿ ಸ್ವಾವಲಂಬಿಯಾಗಿ ಮಾದರಿ ಜೀವನ ನಡೆಸುವಲ್ಲಿ ಉತ್ತಮವಾಗಿ ಕಾರ್ಯನಿರ್ವಹಿಸುತ್ತಿದೆ, ಹಾಗೂ ಇಲಾಖೆಯ ಅನುದಾನದಡಿಯಲ್ಲಿ ಶಿಶುಪಾಲನ ಯೋಜನೆಯನ್ನು ಕೂಡ ಅತ್ಯಂತ ಯಶಸ್ವಿಯಾಗಿ ಅನುಷ್ಠಾನಗೊಳಿಸುತ್ತಿದೆ. ಇದೇ ರೀತಿ ಕಾರ್ಯನಿರ್ವಹಿಸಿ ದೇಶದಲ್ಲಿ ಮಾದರಿ ಸಂಸ್ಥೆಯಾಗಿ ಗುರುತಿಸುವಂತಾಗಲಿ ಎಂದು ಶ್ಲಾಘಿಸುತ್ತೇನೆ.



Shri. Priyaranjan Bidhar

Impact Catalyst & Chief, Livelihood Programs

Trust for Retailers & Retail Associates of India (TRRAIN)

TRRAIN supports Ashadeepa because of the consistent impact that they demonstrate through the Pankh program for youth with disabilities. What stands out is their ability to mobilize motivated and talented trainees, and prepare them to thrive as productive employees in the retail and allied sectors.

All TRRAIN community partners, including Ashadeepa, undergo a rigorous due diligence process and regular audits to ensure compliance, transparency and measurable outcomes. Ashadeepa has consistently met TRRAIN's high standards for success, making them a trusted and valued partner in our mission towards skill building and inclusive livelihoods for youth with disabilities.

DECLARATION

-Zero tolerance of Sexual abuse at workplace



ASHADEEPA ANGAVIKALARA SARVA ABHIWUDDHI SEVA SAMSTHE

Reg. No. 29:2004-05

Ref: ASHA/AN/FY-2024-25/111

Date: 27-02-2025

Annual report of Sexual Harassment of Woman at Workplace (Prevention, Prohibition and Redressal) Act, 2013, for the calendar year 2024

(as per the requirement of Section 21 (1))

Name of the Organization: Ashadeepa Angavikalara Sarva Abhiwruddhi Seva Samsthe

1. Number of Sexual Harassment complaints received during the year, 2024: 0
2. Number of cases disposed of during the year, 2024: 0
3. Number of cases pending as on 31st December 2024 for more than 90 days: 0
4. Number of workshops or awareness programme against sexual harassment carried out during the year, 2024: 2 on 19th August, 2024, and 25th November, 2024
5. Nature of action taken by the employer during the year 2024 is captured below:
 - Two employee sensitization and awareness trainings were conducted.
 - Posters on prevention of sexual harassment at the workplace and details of IC committee members have been displayed prominently in the office space
 - The details of IC members are given below:

Whom to contact and report in case of sexual harassment at the workplace				
Sl No.	Name	Designation	Contact details	Email
1	Ms. Savitri Hiremath	Presiding Officer	8310007554	savitrihiremath5@gmail.com
2	Ms. Sainajbi Mulla	Member	7022670314	sainajmulla87@gmail.com
3	Mr. Mallappa Managavi	Member	6363878477	managavi87@gmail.com
4	Ms. Trupti Salimath	External Member	9945042116	truptisalimath227@gmail

6. Summary of the action taken on Complaints of Sexual Harassment for calendar year 2024:

Not Applicable

Sl. No.	Complaint No.	Complainant	Respondent	Disciplinary Action
1.	0	0	0	0
2	0	0	0	0

The report has been prepared in compliance of Section 21 (1) of Sexual Harassment of Woman at Workplace (Prevention, Prohibition and Redressal) Act, 2013.

Yours faithfully,

Savitri Hiremath
Savitri Hiremath

Presiding Officer

On behalf of the Internal Committee [IC]

Ashadeepa Angavikalara Sarva Abhiwruddhi Seva Samsthe

Dated: 27-02-2025

Regd Address: Ward No. 3, Mahantesh Film Theatre Road, Kathari Hospital Old Building, ilkal Taluku ilkal, Dist Bagalakote - 587 125, Karnataka (India) 1
Mob : +91 99865 09910 / Ph : 08351-200085 / 08351-468622 E-mail: ashadeepa.orgilkal@gmail.com Website : www.ashadeepa.org



ASHADEEPA ANGAVIKALARA SARVA ABHIWUDDHI SEVA SAMSTHE

Reg. No. 29:2004-05

Ref: ASHA/AN/FY-2024-25/111

Date:27-02-2025

To
The District Officer (Deputy Commissioner)
District Administrative Building, Navanagar, Bagalkot-587103

Dear Madam,

Sub: Submission of Annual Report for the calendar year 2024 under the Sexual Harassment of Women at Workplace (Prevention, Prohibition, and Redressal) Act, 2013 – Reg.


Please find enclosed the Annual Report under Section 21 of the Sexual Harassment of Women at Workplace (Prevention, Prohibition, and Redressal) Act, 2013 for your kind information and records.

We will be happy to provide any additional information if required.

Kindly acknowledge receipt.

Thanking you,

Sincerely,


Savitri Hiremath
Presiding Officer

On behalf of the Internal Committee [IC]
Ashadeepa Angavikalara Sarva Abhiwruddhi Seva Samsthe

CC:

The Chief Executive Officer
Ashadeepa Angavikalara Sarva Abhiwruddhi Seva Samsthe, ILKAL



OUR ESTEEMED PARTNERS*

THE NATIONAL TRUST, NEW DELH
-SINCE 2017
Grant-in-aid support



**DEPARTMENT OF WOMEN & CHILD DEVELOPMENT
GOVT. OF KARNATAKA**
-SINCE 2011
Grant-in-aid support



REBUILD INDIA, MUMBAI
-SINCE 2023
Unrestricted flexible funding support



**TRUST FOR RETAILERS & RETAIL ASSOCIATES
OF INDIA, MUMBAI**
-SINCE 2016
Funding & knowledge partner



ENABLE INDIA, BENGALURU
-SINCE 2022
Funding & Knowledge partner



THE ASSOCIATION OF PEOPLE WITH DISABILITY
-SINCE 2015
Funding, Technical & Knowledge partner



**NATIONAL BANK FOR AGRICULTURE & RURAL
DEVELOPMENT**
-SINCE 2014
Skillling, up-skilling for entrepreneurship



DHWANI FOUNDATION, BENGALURU
-SINCE 2023
Knowledge, mentorship & staff welfare fund support





1st Floor, #5, 1st Main, 4th Block, HBR Layout, Bangalore - 560 043, India. Phone: 080-2544 0391
Mobile: +91-78299 25074/25075/25078 Email: contact@sfa-ca.in Website: www.sfa-ca.in

AUDITOR'S REPORT

We have audited the attached Balance Sheet of **ASHADEEPA ANGAVIKALARA SARVA ABHIWRUDDHI SEVA SAMSTHE** as on 31st March 2025, and the annexed Income & Expenditure Account for the year ended on that date which is in agreement with the books of account maintained by the Society. The financial statements are the responsibility of the Managing Committee of the Society. Our responsibility is to express an opinion on these financial statements based on our audit.

We have conducted the audit in accordance with auditing standards generally accepted in India. These standards require that we plan and perform the audit to obtain reasonable assurance about whether the financial statements are free from material misstatement. An audit includes examining, on a test basis, evidence supporting the amounts and disclosures in the financial statements. An audit also includes assessing the accounting principles used and significant estimates made by the management, as well as evaluating the overall financial statement presentation. We believe that our audit provides a reasonable basis for our opinion.

We have obtained all the information and explanations which, to the best of our knowledge and belief, were necessary for the purposes of our audit. In our opinion and to the best of our information and according to the explanations given to us, the accounts give a true and fair view in conformity with the applicable accounting principles generally accepted in India.

- In the case of the Balance Sheet of the state of affairs of the Society as at 31st March 2025.
- In the case of the Income and Expenditure Account of its excess of Expenditure over Income for the year ended 31st March 2025.
- In the case of Receipts & Payments account of the total financial transaction of the Society for the year ended 31st March 2025.

for Sunil Fernandes & Associates

Sunil Fernandes

Sunil Fernandes, FCA
Chartered Accountant
Member No. 202532
FRN: 0094055
UDIN: 25202532BMIWUC9599



Date: 25.07.2025
Place: Bangalore

ASHADEEPA ANGAVIKALARA SARVA ABHIWRUDDHI SEVA SAMSTHE
(Ward No.4, Ilkal, Shivaji Nagara, Hungund Taluk, Bagalkot District, Karnataka - 587125)
BALANCE SHEET AS ON 31.03.2025

PARTICULARS	SCHEDULE	AMOUNT	AMOUNT
<u>I. LIABILITIES:</u>			
1. General Fund	1		735,202.76
2. Capital Fund	2		4,154,788.86
3. Specific Fund	3		(771,907.25)
3. SAHAYOG REVOLVING FUND(Staff Welfare Fund)	4		293,330.00
4. Current Liabilities	5		721,073.00
5. TRRAIN TDS Receivable (Accrued)			585,590.00
TOTAL			5,718,077.37
<u>II. ASSETS:</u>			
<u>1. Fixed Assets</u>	6		
a) Gross Block			4,154,788.86
<u>2. Current Assets</u>			
a) Cash & Bank Balances	7	530,367.53	
b) Loans & Advances	8	97,330.98	
c) Rental Deposit		350,000.00	977,698.51
3. TRRAIN TDS Receivable (Accrued)			585,590.00
Notes to Accounts	9		
TOTAL			5,718,077.37

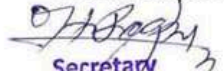
As per our report of even date.
for Sunil Fernandes & Associates


Sunil Fernandes
Chartered Accountant
Member No.202532
FRN:0094055
UDIN:25202532BWIWUC9599

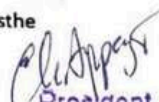


Place: Bangalore
Date:25.07.2025

for Ashadeepa Angavikalara Sarva
Abhiwruddhi Seva Samsthe


Secretary
Ashadeepa Angavikalara Sarva
Abhiwruddhi Seva Samsthe
Raghu N Hubballi
Secretary




President
Ashadeepa Angavikalara Sarva
Abhiwruddhi Seva Samsthe
Chandru B. Appaji
President

ASHADEEPA ANGAVIKALARA SARVA ABHIWRUDDHI SEVA SAMSTHE
(Ward No.4, Ilkal, Shivaji Nagara, Hungund Taluk, Bagalkot District, Karnataka - 587125)

INCOME & EXPENDITURE ACCOUNT FOR THE YEAR ENDING 31.03.2025

PARTICULARS	SCHEDULE	AMOUNT	AMOUNT
I. INCOME:			
<u>1. Voluntary Contribution/Donations</u>			
Donation			5,870,675.00
<u>2. Grant Donation/ Specific Fund</u>			
Sahayog Programme(Staff Welfare Fund)		413.00	
Disha-Grant -Disha Project		1,320,000.00	
DSR-Grant-Impact Foundation India		801,025.00	
Grants - EI & EE		407,456.99	
Grant - Shishupalana Kendra-SPKBGK		359,987.00	
Grant- Shishupalana Kendra-SPKILK		449,324.00	
Grants - Nabard		147,373.00	
Grants-Panakh TRRAIN (Mandya)		901,126.00	
Grants-Pankh II Bangalore		1,852,042.00	
Grants-Pankh I ILKAL		1,644,763.00	
Grants- Pankh MYSORE		1,664,853.00	
Grant- Vijayapura for Niramaya Insurance		52,050.00	
SMSK-Grant - Santwana Program		647,300.00	10,247,712.99
<u>3. Other Income</u>			
Bank Interest		5,687.00	
TDS Amount Received		128,217.80	133,904.80
<u>4. TRRAIN TDS Receivable (Accrued)</u>			585,590.00
TOTAL INCOME			16,837,882.79

Continue...2

Place: Bangalore

Date: 25.07.2025




ASHADEEPA ANGAVIKALARA SARVA ABHIWUDDHI SEVA SAMSTHE
(Ward No.4, Ilkal, Shivaji Nagara, Hungund Taluk, Bagalkot District, Karnataka - 587125)

INCOME & EXPENDITURE ACCOUNT FOR THE YEAR ENDING 31.03.2025

II. EXPENDITURE:			
1. Programme Expenditure			
I. AshaDeeepa Grant Programme Expenses			
a) Dasara Project- Impact Foundation India Capital Expenditure	9	750,225.00 50,800.00	
b) Disha Project Expenditure	10	1,320,000.00	
c) EI & EE Programme	11	407,456.99	
d) NBARAD Program Exp	12	147,373.00	
e) Pankh Project- Bangalore	13	1,852,042.00	
f) Pankh Project Ilkal	14	1,644,763.00	
g) Pankh Project Mandya	15	901,126.00	
h) Pankh Project-Mysore	16	1,664,853.00	
i) Santwana Mahila Sahayavani Kendra	17	647,300.00	
j) Shishupalana Kendra Programme-SPKBGK	18	359,987.00	
k) Shishupalana Kendra Programme-SPKILK	19	449,324.00	
l) Sahayog Staff Welfare		413.00	
m) Vijayapura Nirmaya Insurance		52,050.00	10,247,712.99
II. Ashadeeepa Other Programme Expenses			
a) Asha deep Project Expenses	20	62,883.40	
b) Cross Disability Programme	21	2,030,345.00	
c) Navajeevan Old age home	22	1,222,599.59	
d) Punith Special School	23	2,144,730.00	5,460,557.99
2. TRRAIN TDS Receivable (Accrued)			585,590.00
3. Capital Expenditure			158,497.00
TOTAL EXPENDITURE			16,452,357.98
Excess of Income/(Expenditure)			385,524.81

As per our report of even date.
for Sunil Fernandes & Associates

for Ashadeeepa Angavikalara Sarva
Abhiwruddhi Seva Samsthe



Sunil Fernandes
Chartered Accountant
Member No.202532
FRN:0094055
UDIN:25202532BMIWUC9599




Secretary

Ashadeeepa Angavikalara Sarva
Abhiwruddhi Seva Samsthe


President

Ashadeeepa Angavikalara Sarva
Abhiwruddhi Seva Samsthe



Place: Bangalore
Date:25.07.2025



MAJOR RECOGNITIONS OF THE YEAR 2025

